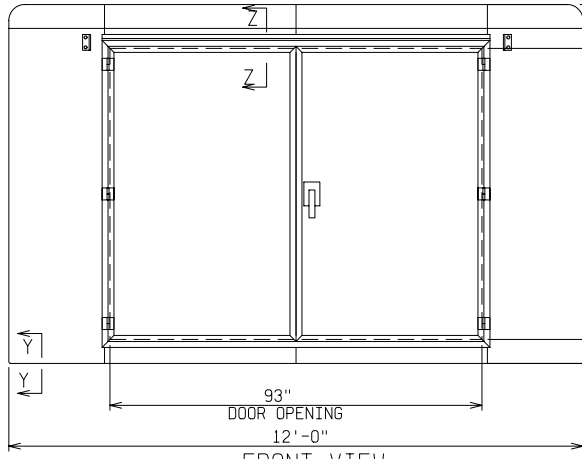
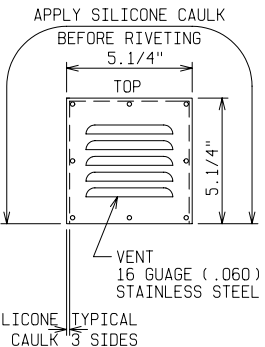


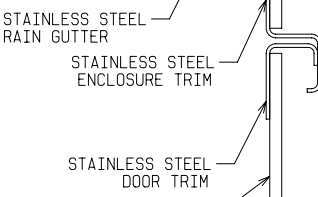
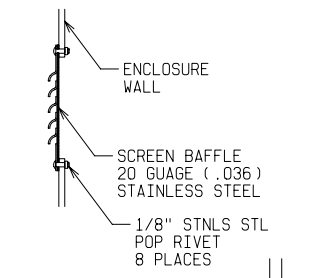
TOP VIEW



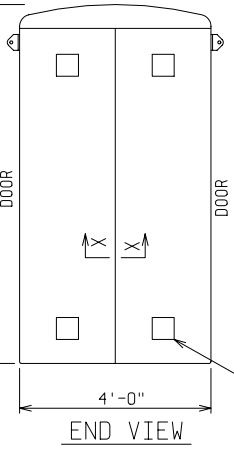
FRONT VIEW



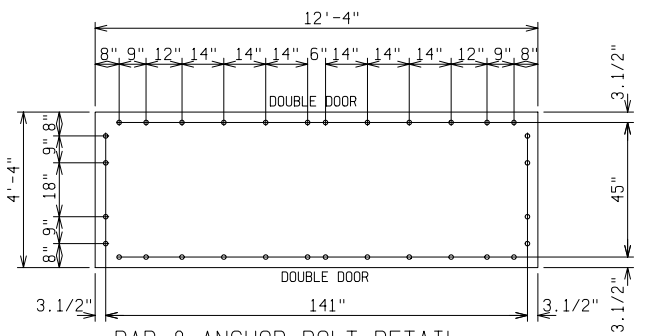
DETAIL A



SECTION Z-Z



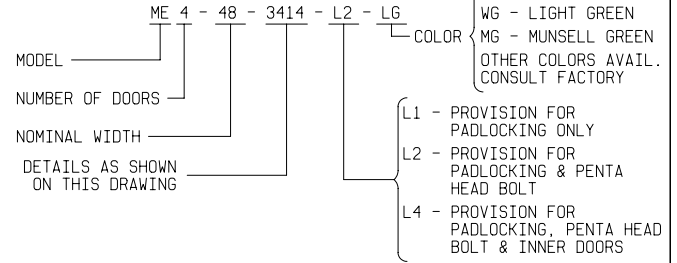
END VIEW



PAD & ANCHOR BOLT DETAIL

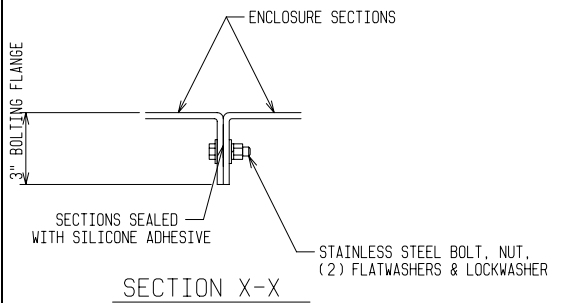
ANCHOR BOLTS TO BE 5/8" DIA. & TO EXTEND 1-1/2" MINIMUM ABOVE PAD. PROVIDE CABLE ENTRY AS REQ'D.

ORDERING INFORMATION:

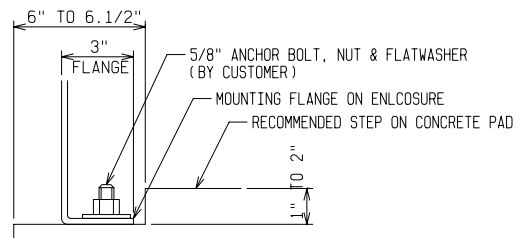


NOTE:

- MATERIAL:
  - FIBERGLASS LAMINATE 1/4" NOMINAL THICKNESS
  - EXTERIOR UV STABILIZED GELCOAT - 14 MIL NOMINAL THICKNESS
  - FIRE RETARDANT - DOES NOT SUPPORT COMBUSTION
  - STAINLESS STEEL HARDWARE
- STANDARDS:
  - CERTIFIED TEST DATA OF ASTM STRUCTURAL STANDARDS AVAILABLE UPON REQUEST



SECTION X-X



SECTION Y-Y

FIBERGLASS ENCLOSURE 4 FT WIDE x 7 FT 6 IN HIGH x 12 FT LONG TWO DOUBLE ACCESS DOORS			
POWER DESIGN INC. ODELL, OREGON			
DRAWN: BB	PAGE	DATE 3-4-03	DRAWING NO. 3414

FILE REF: