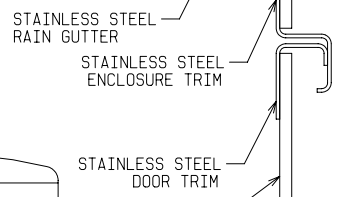
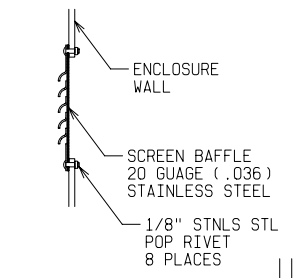
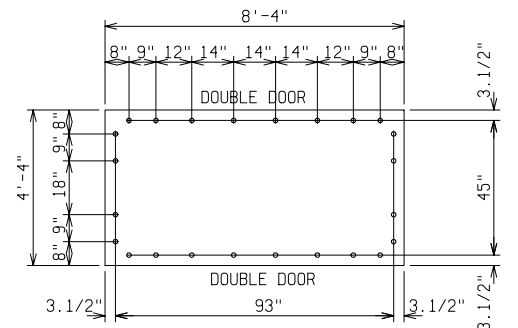


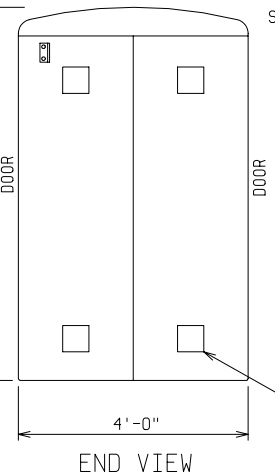
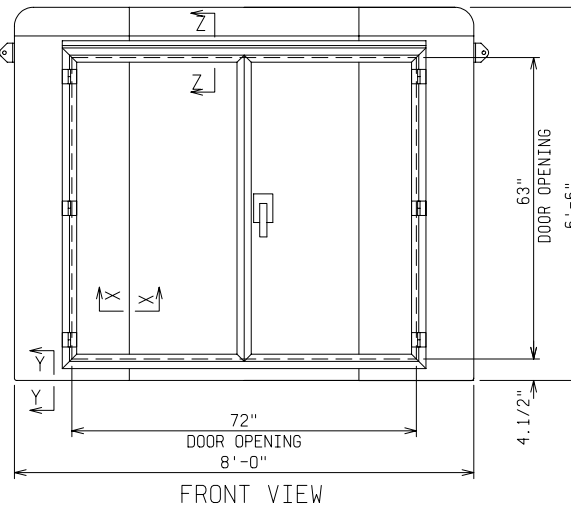
DETAIL A



SECTION Z-Z

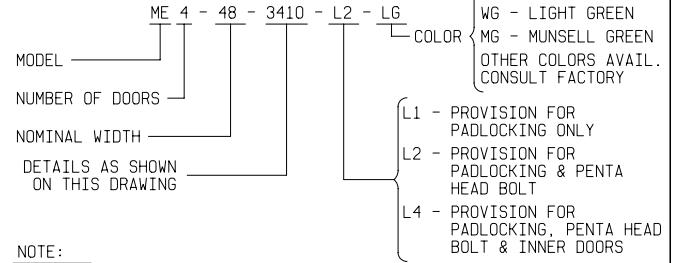


ANCHOR BOLTS TO BE 5/8" DIA. & TO EXTEND 1-1/2" MINIMUM ABOVE PAD. PROVIDE CABLE ENTRY AS REQ'D.



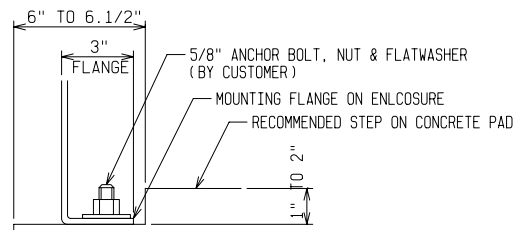
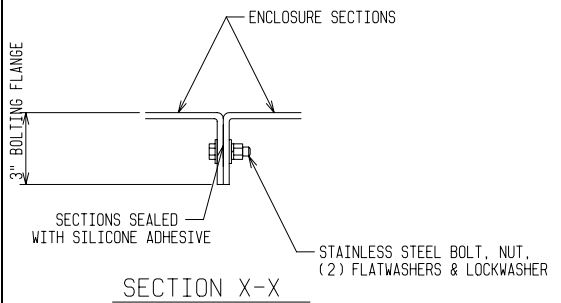
END VIEW

ORDERING INFORMATION:



NOTE:

- MATERIAL:
 - FIBERGLASS LAMINATE 1/4" NOMINAL THICKNESS
 - EXTERIOR UV STABILIZED GELCOAT - 14 MIL NOMINAL THICKNESS
 - FIRE RETARDANT - DOES NOT SUPPORT COMBUSTION
 - STAINLESS STEEL HARDWARE
- STANDARDS:
 - CERTIFIED TEST DATA OF ASTM STRUCTURAL STANDARDS AVAILABLE UPON REQUEST



FIBERGLASS ENCLOSURE
4 FT WIDE x 6 FT 6 IN HIGH x 8 FT LONG
TWO DOUBLE ACCESS DOORS

POWER DESIGN INC.
ODELL, OREGON

DRAWN: BB	PAGE	DATE 3-4-03	DRAWING NO. 3410
--------------	------	----------------	---------------------

FILE REF: