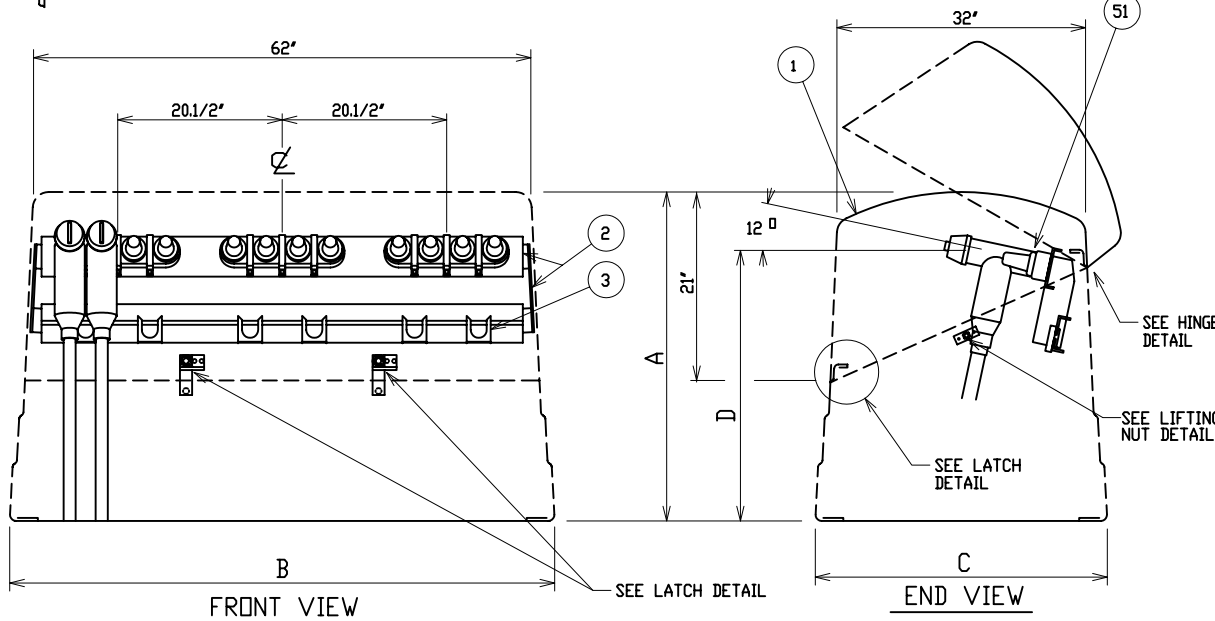
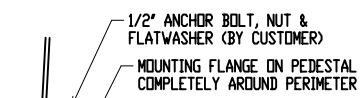


ANCHOR BOLTS TO BE 1/2" DIA. AND TO EXTEND 1-1/2" MINIMUM ABOVE PAD

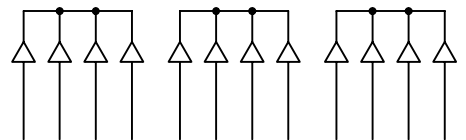


MATERIAL LIST - STANDARD UNIT	
ITEM	DESCRIPTION
1	POWER DESIGN INC MODEL NO CJPF-35/B FIBERGLASS CABLE JUNCTION PEDESTAL - MUNSELL GREEN
2	ALUMINUM JUNCTION MOUNTING BAR AND PARKING CLIP MOUNTING RAILS
3	ADJUSTABLE LOCATION STAINLESS STEEL PARKING CLIPS
OPTIONAL EQUIPMENT	
51	600 AMP DEADBREAK JUNCTION - SPECIFY MANUFACTURER, VOLTAGE AND 2, 3, OR 4-WAY

- NOTE:
- ORDERING INFORMATION:
USER SHOULD SELECT "D", TERMINAL HEIGHT, DESIRED. SPECIFY "A", OVERALL HEIGHT, AS A SUFFIX TO THE BASIC PART NO. i.e., CJPF-35/B-30 = 30" OVERALL HEIGHT
 - MATERIAL:
1) FIBERGLASS LAMINATE 3/16" NOMINAL THICKNESS
2) EXTERIOR UV STABILIZED GELCOAT - 14 MIL NOMINAL THICKNESS - WHITE INTERIOR
3) FIRE RETARDANT - DOES NOT SUPPORT COMBUSTION
4) STAINLESS STEEL HARDWARE
 - MOUNTING BAR WILL WITHSTAND A MINIMUM 400 LB. LOADING TO INSTALL OR REMOVE ELBOWS.



PEDESTAL MTG. DETAIL



SCHEMATIC

MODEL No.	OVERALL HEIGHT	OVERALL WIDTH AT BOTTOM	OVERALL DEPTH AT BOTTOM	JUNCTION TERMINAL HEIGHT
	A	B	C	D
CJPF-35/B-30	30"	66.1/4"	37.1/2"	21.1/2"
CJPF-35/B-41	41"	68.1/2"	39.3/4"	32.1/2"

DEADFRONT CABLE JUNCTION PEDESTAL

15/25KV 600 AMP 95/125KV BIL

THREE PHASE 2, 3, OR 4-WAY DEADBREAK JUNCTION



DRAWN: RB	PAGE	DATE 3-29-04	DRAWING NO. 3388-R1
-----------	------	--------------	---------------------

FILE REF: