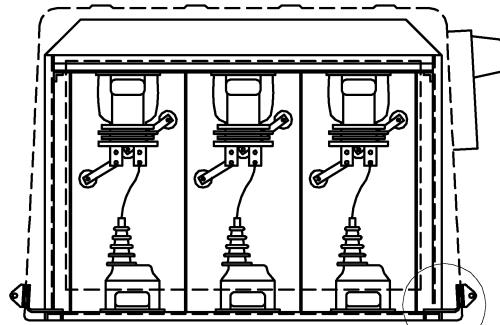
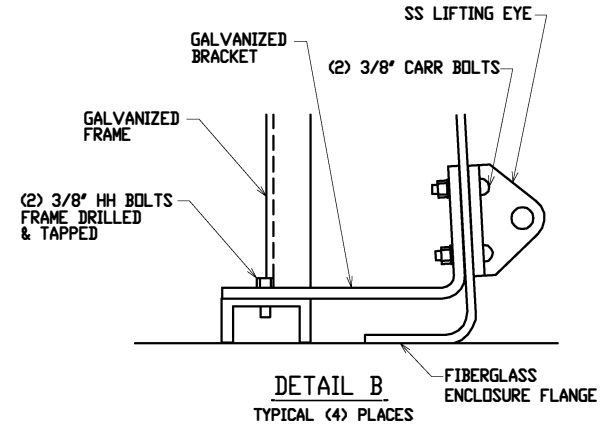


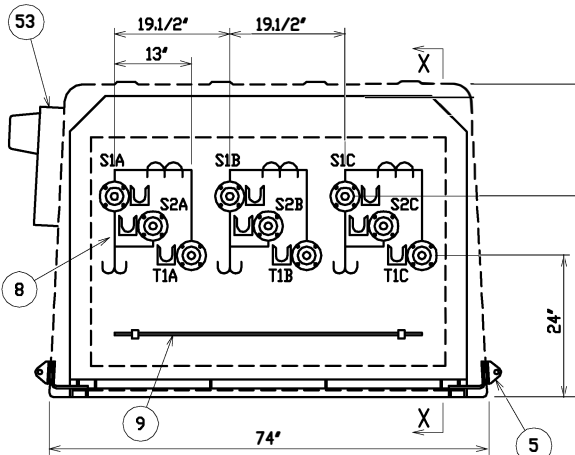
SIDE A - OPTIONAL
2 BUSHINGS/PHASE



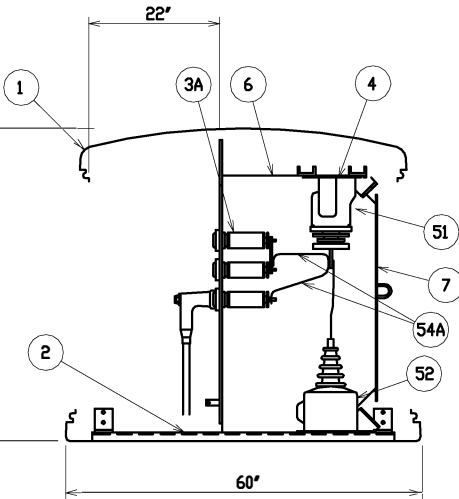
SIDE B



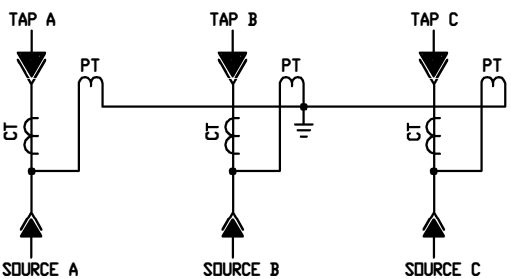
SEE DETAIL B



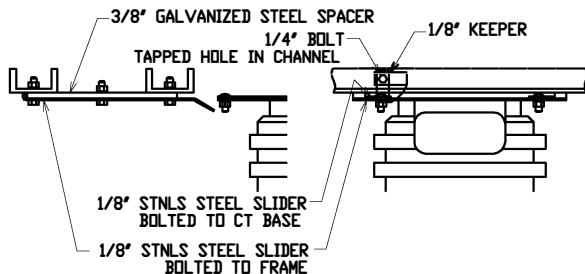
SIDE A
3 BUSHINGS/PHASE



SECTION X-X



SCHEMATIC



DETAIL A

MATERIAL LIST - STANDARD UNIT

| ITEM | DESCRIPTION |
|------|---|
| 1 | FIBERGLASS EQUIPMENT ENCLOSURE - 4 DOOR - MUNSELL GREEN STAINLESS STEEL HARDWARE - PDI MODEL NO. PE4-74-0 |
| 2 | FREE STANDING GALVANIZED STEEL FRAME |
| 3A | 200 AMP BUSHING WELL - 25KV - 125KV BIL |
| 3B | 600 AMP BUSHING - 25KV - 125KV BIL |
| 4 | SLIDE-IN CT MOUNTING HARDWARE - SEE DETAIL A |
| 5 | REMOVEABLE LIFTING EYES FOR LIFTING ENCLOSURE AND FRAME AS ONE UNIT |
| 6 | 3/16" GPD-3 BARRIER |
| 7 | 1/4" CLEAR LEXAN LIFT-OFF COVER BARRIERS - TOTAL 3 |
| 8 | BLACK LINE SCHEMATIC ON REFLECTIVE YELLOW TAPE ON FRONT PANEL |
| 9 | 3/8" DIA COPPER GROUND BAR |

OPTIONAL EQUIPMENT

| | |
|-----|--|
| 51 | CURRENT TRANSFORMER - OUTDOOR TYPE - 15/25KV - 110/150KV BIL |
| 52 | POTENTIAL TRANSFORMER - OUTDOOR TYPE - 15KV - 110/125KV BIL |
| 53 | METER BASE WITH 10-POLE TEST SWITCH - FORM 6S |
| 54A | 1/8" X 1" COPPER BUS - 200 AMP |
| 54B | 1/4" X 2" COPPER BUS - 600 AMP |
| 55 | SECONDARY WIRING BETWEEN CT'S, PT'S AND METER BASE - PAGE 3 |
| 56 | BOX PAD - PDI MODEL BP-78W64M30-MG - PAGE 2 |

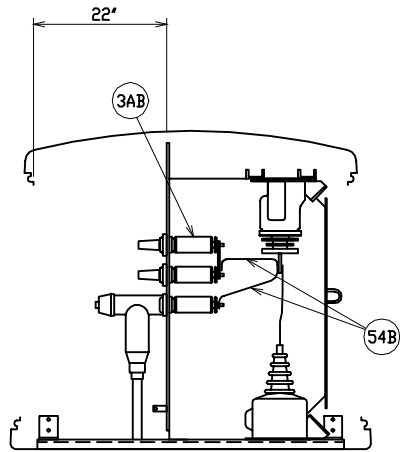
PRIMARY METERING

| | | | |
|-------------|----------------|----------------|--------------|
| THREE PHASE | 15/25KV | 200/600 AMP | 95/125KV BIL |
| | (3) OUTDOOR CT | (3) OUTDOOR PT | |

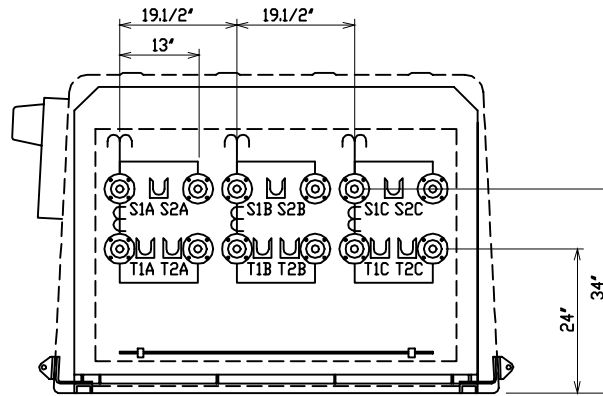
POWER DESIGN INC.
ODELL, OREGON

| | | | |
|--------------|----------------|------------------|---------------------|
| DRAWN: RB | PAGE 1 OF 2 | DATE 12-31-08 | DRAWING NO. 3630 |
|--------------|----------------|------------------|---------------------|

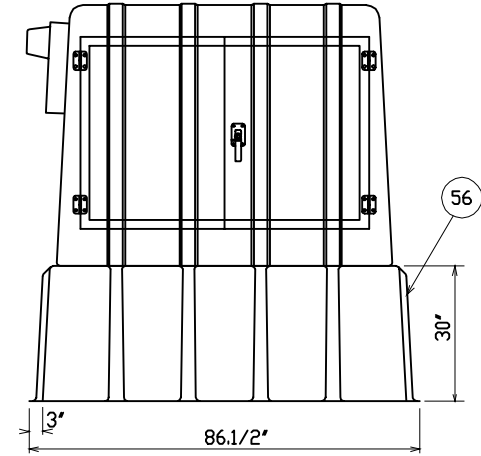
FILE REF:



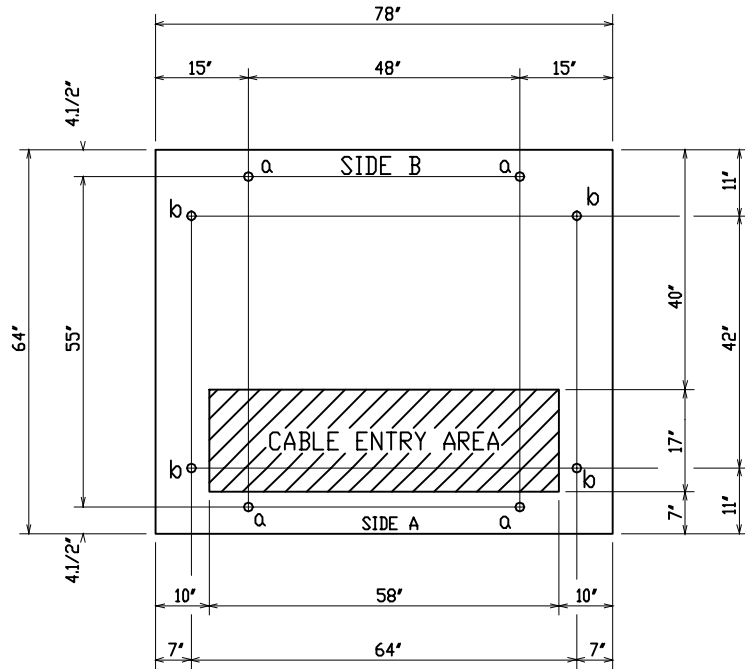
SECTION X-X OPTIONAL
600 AMP BUSHINGS



SIDE A - OPTIONAL
4 BUSHINGS/PHASE



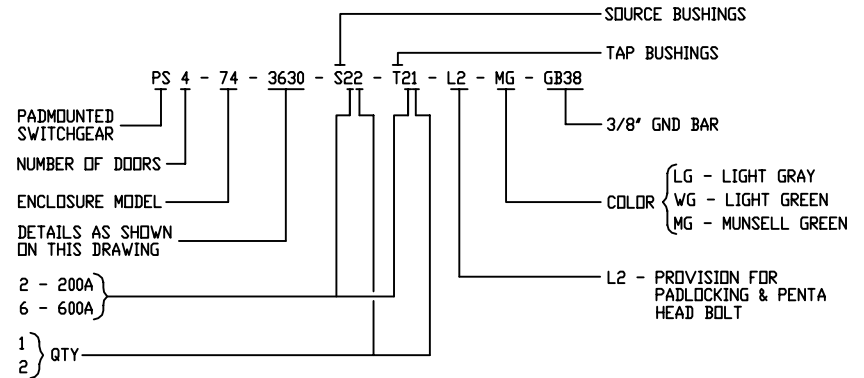
BP-78W64M30 BOX PAD



PAD & ANCHOR BOLT DETAIL

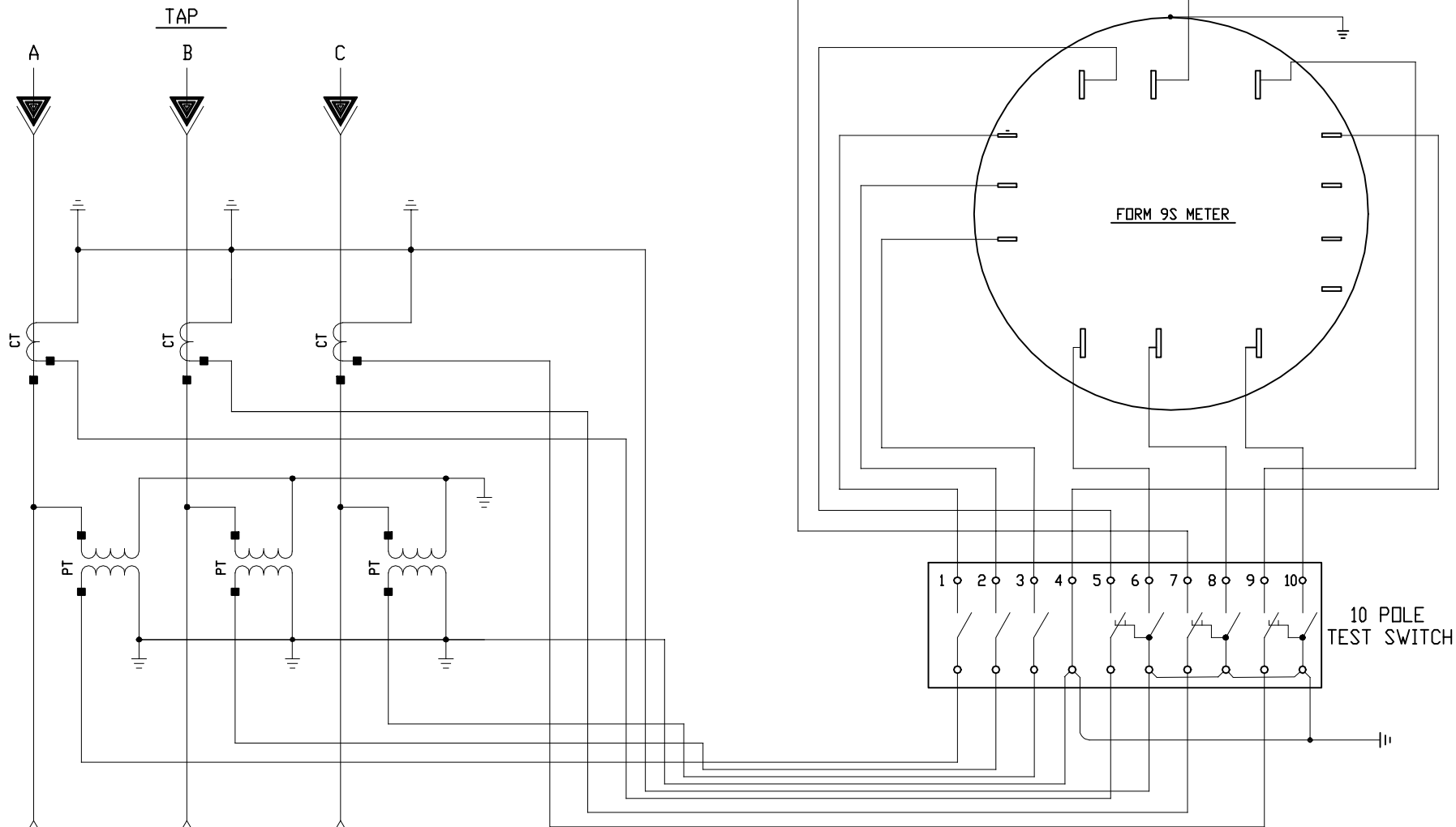
ANCHOR BOLTS TO BE 1/2" DIA. & TO EXTEND:
a = 1-1/2" ABOVE PAD
b = 2-1/2" ABOVE PAD

ORDERING INFORMATION



| | | | |
|---|----------------|------------------|---------------------|
| PRIMARY METERING | | | |
| THREE PHASE | 15/25KV | 200/600 AMP | 95/125KV BIL |
| (3) OUTDOOR CT | | (3) OUTDOOR PT | |
| POWER DESIGN INC. ODELL, OREGON | | | |
| DRAWN: RB | PAGE 2 OF 3 | DATE 12-31-08 | DRAWING NO. 3630 |

FILE REF:



WIRE COLOR CODES:

| <u>CT</u> | <u>PT</u> |
|---------------|---------------|
| A \square = | A \square = |
| B \square = | B \square = |
| C \square = | C \square = |
| N \square = | N \square = |

NOTES

1) ALL WIRE #12 STRANDED THHN

| | | | |
|---|----------------|------------------|---------------------|
| PRIMARY METERING | | | |
| THREE PHASE | 15/25KV | 200/600 AMP | 95/125KV BIL |
| (3) OUTDOOR CT | | (3) OUTDOOR PT | |
| POWER DESIGN INC. ODELL, OREGON | | | |
| DRAWN RB | PAGE 3 OF 3 | DATE 12-31-08 | DRAWING NO. 3630 |

FILE REF: