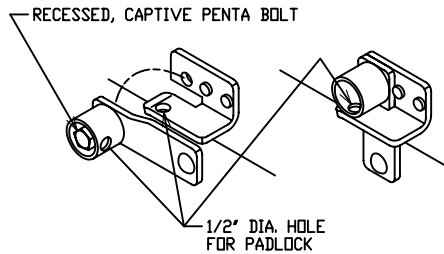
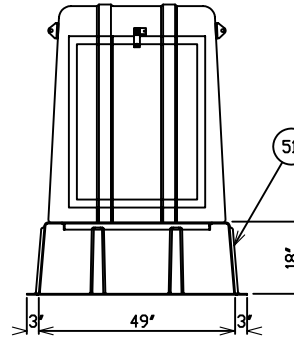


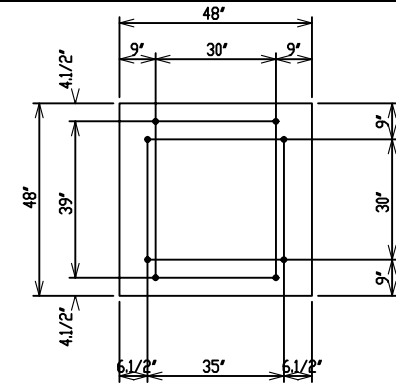
TOP VIEW



LATCH DETAIL

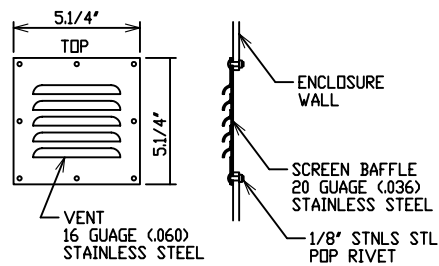
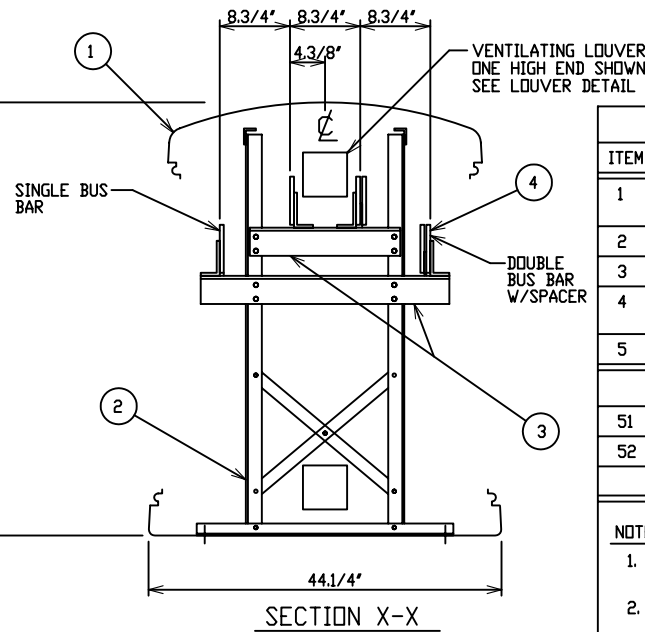
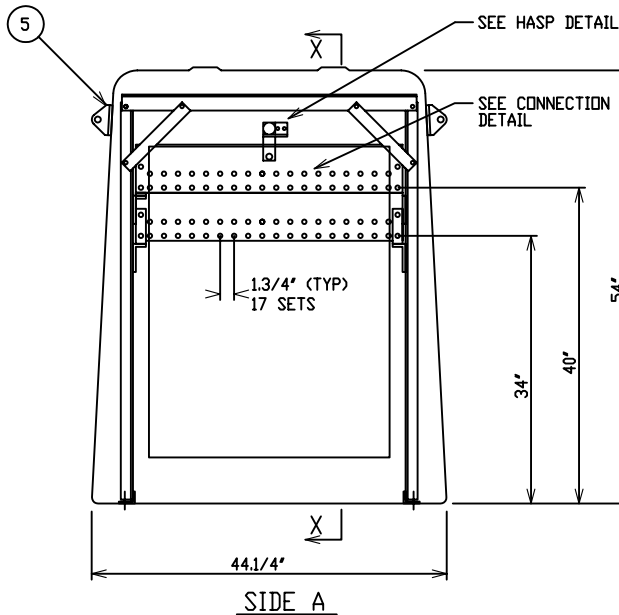


ENCLOSURE WITH OPTIONAL BOX PAD



PAD AND ANCHOR BOLT DIMENSIONS

ANCHOR BOLTS TO BE 5/8" DIA. AND TO EXTEND 1 1/2" MIN. PROVIDE CABLE ENTRY AS REQUIRED.



LOUVER DETAIL

MATERIAL LIST - STANDARD UNIT

ITEM	DESCRIPTION
1	FIBERGLASS EQUIPMENT ENCLOSURE - 2 DOOR - MUNSELL GREEN STAINLESS STEEL HARDWARE - PDI MODEL PE2-44-0-L2
2	ALUMINUM FREE STANDING FRAME
3	FIBERGLASS ANGLE INSULATOR - GPD-3
4	COPPER OR ALUMINUM BUS BARS - 17 POSITION - NEMA 2 HOLE DRILLING SEE PAGE 2 FOR SIZE
5	SS LIFTING EYES

OPTIONAL EQUIPMENT

51	BP-46W46M18-MG BOX PAD - ALSO AVAILABLE IN 30" & 36" HEIGHTS
52	LEXAN INNER DOOR, CLEAR, 1/4" THICK, ENCLOSE DOOR (-L4) OPTION

NOTE:

- SEE PAGE 2 FOR QUANTITY, AMPACITY, & TYPE OF BUS BAR
- USE AMPACITY TABLES TO COMPLETE THE CATALOG NUMBER  
EXAMPLE \*PS2-44-2222-L2-MG-C66\*  
DOUBLE 1/2X6" COPPER BUS BAR

CATALOG NO: PS2-44-2222-L2-MG-XY

PADMOUNT SECONDARY SWITCHGEAR

600V

(17) NEMA 2 HOLE

THREE PHASE

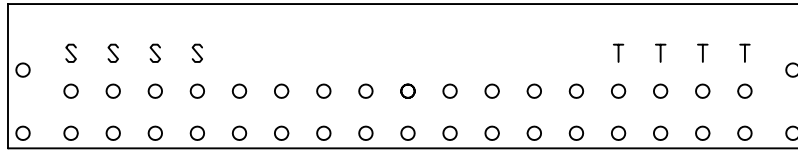
COPPER OR ALUMINUM BUS PHASE & NEUTRAL



**POWER DESIGN INC.**  
DELL, OREGON

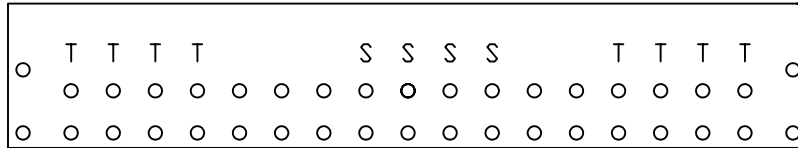
DRAWN:	PAGE	DATE	DRAWING NO.
RB	1 OF 2	3-19-07	2222-R3

FILE REF:



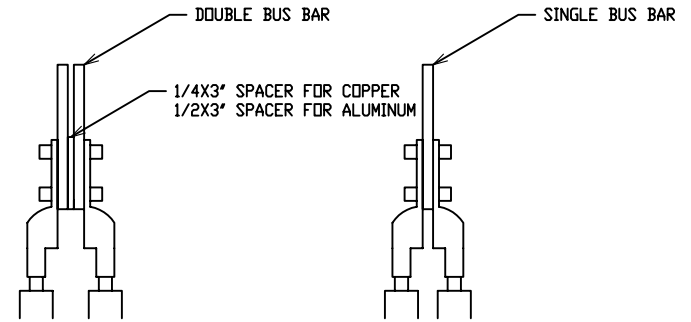
S-T CONNECTION DETAIL

ALL SOURCE CABLES ON ONE END  
ALL TAP CABLES ON OPPOSITE END



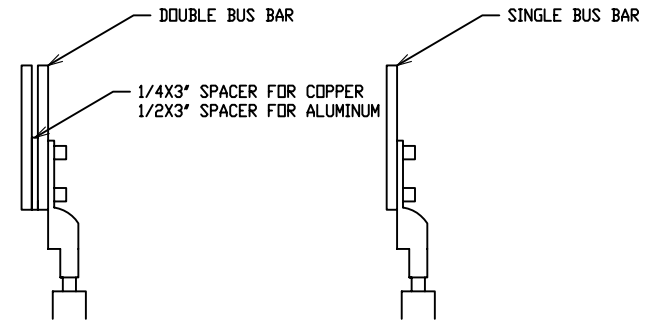
T-S-T CONNECTION DETAIL

ALL SOURCE CABLES IN CENTER  
ALL TAP CABLES ON ENDS IN EQUAL LOAD CONFIGURATIONS



TWO SIDED CONNECTION

MAX (34) CABLES/PHASE



ONE SIDED CONNECTION

MAX (17) CABLES/PHASE

COPPER BUS BAR

	SINGLE BUS BAR		DOUBLE BUS BAR W/1/4" SPACER	
1/2X4	1600 A	-C4	2500 A	-C44
1/2X5	1900 A	-C5	3000 A	-C55
1/2X6	2200 A	-C6	3500 A	-C66
1/2X8	2700 A	-C8	4300 A	-C88

S-T AMPACITY TABLE

MULTIPLY ABOVE AMPACITIES BY 1.8  
WHEN USING T-S-T CONNECTION DETAIL

ALUMINUM BUS BAR

	SINGLE BUS BAR		DOUBLE BUS BAR W/1/2" SPACER	
1/2X4	1300 A	-A4	1900 A	-A44
1/2X5	1500 A	-A5	2200 A	-A55
1/2X6	1700 A	-A6	2500 A	-A66
1/2X8	2000 A	-A8	2900 A	-A88

S-T AMPACITY TABLE

MULTIPLY ABOVE AMPACITIES BY 1.8  
WHEN USING T-S-T CONNECTION DETAIL

NOTE:

- AMPACITY BASED ON 40°C AMBIENT WITH A 30°C RISE
- USE INDUSTRY STANDARD INSTALLATION PRACTICES FOR ASSEMBLY OF LUGS ON BUS BARS.

CATALOG NO: PS2-44-2222-L2-MG-XY

PADMOUNT SECONDARY SWITCHGEAR

600V

(17) NEMA 2 HOLE

THREE PHASE

COPPER OR ALUMINUM BUS PHASE & NEUTRAL



**POWER DESIGN INC.**

ODELL, OREGON

DRAWN:  
RB

PAGE  
2 OF 2

DATE  
3-19-07

DRAWING NO.  
2222-R3

FILE REF: