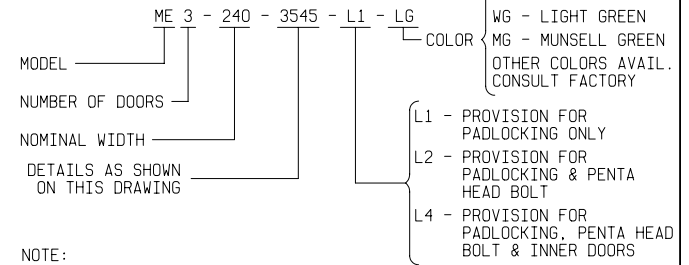
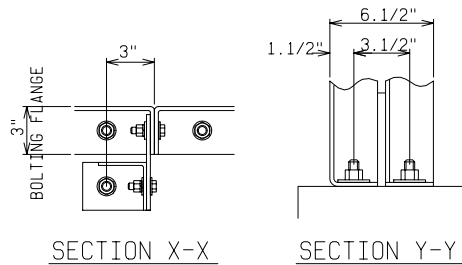
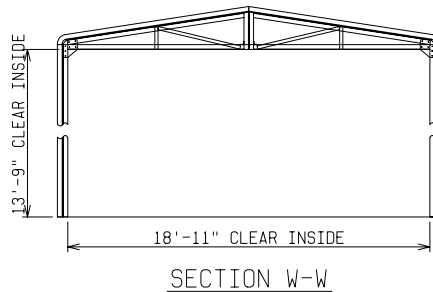


ORDERING INFORMATION:



NOTE:

- MATERIAL:
  - FIBERGLASS LAMINATE 1/4" NOMINAL THICKNESS
  - EXTERIOR UV STABILIZED GELCOAT - 14 MIL NOMINAL THICKNESS
  - FIRE RETARDANT - DOES NOT SUPPORT COMBUSTION
  - STAINLESS STEEL HARDWARE
- STANDARDS:
  - CERTIFIED TEST DATA OF ASTM STRUCTURAL STANDARDS AVAILABLE UPON REQUEST



FIBERGLASS MODULAR ENCLOSURE  
 20 FT WIDE x 11 FT HIGH x 40 FT LONG  
 ONE DOUBLE DOOR & ONE MAN DOOR A/C, LIGHTS & RECEPTACLES

**POWER DESIGN INC.**  
 ODELL, OREGON

DRAWN: BB	PAGE	DATE 7-13-06	DRAWING NO. 3545
--------------	------	-----------------	---------------------

FILE REF: