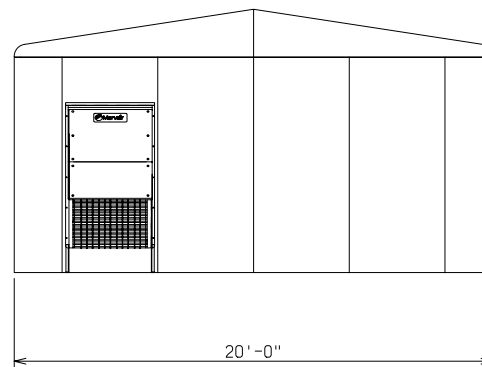
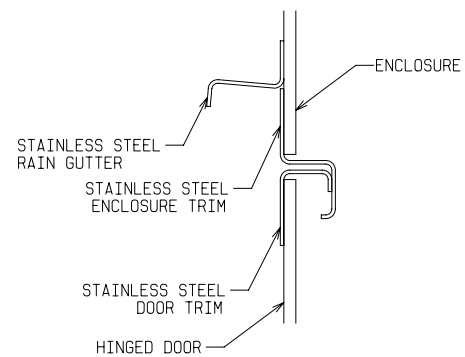


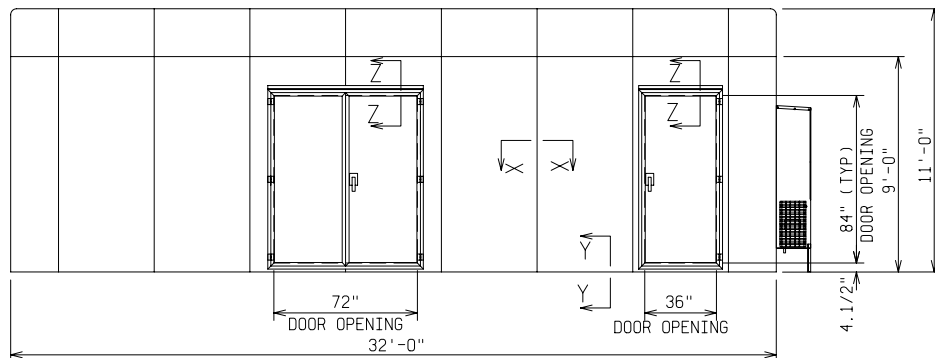
PLAN VIEW



VIEW A-A

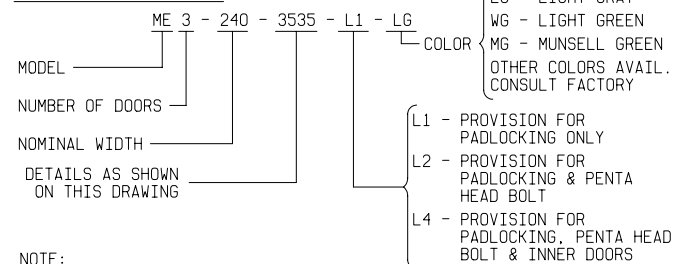


SECTION Z-Z



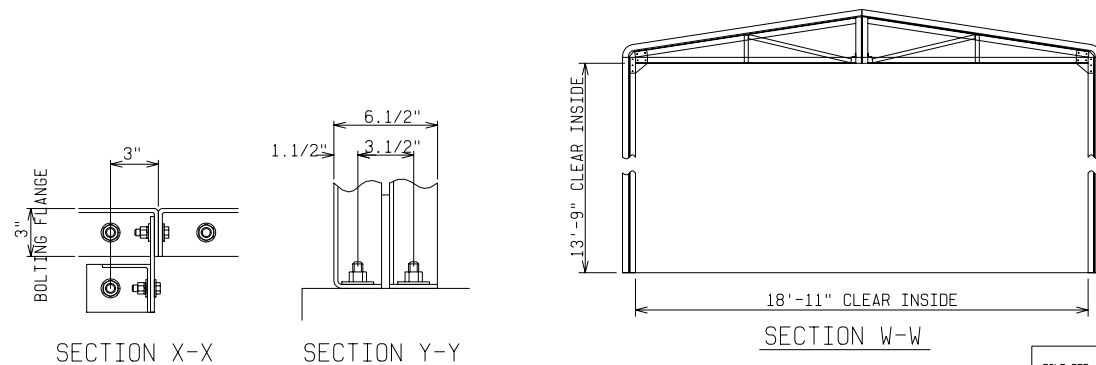
FRONT VIEW

ORDERING INFORMATION:



NOTE:

1. MATERIAL:
  - 1) FIBERGLASS LAMINATE 1/4" NOMINAL THICKNESS
  - 2) EXTERIOR UV STABILIZED GELCOAT - 14 MIL NOMINAL THICKNESS
  - 3) FIRE RETARDANT - DOES NOT SUPPORT COMBUSTION
  - 4) STAINLESS STEEL HARDWARE
2. STANDARDS:
  - 1) CERTIFIED TEST DATA OF ASTM STRUCTURAL STANDARDS AVAILABLE UPON REQUEST



SECTION X-X

SECTION Y-Y

SECTION W-W

FIBERGLASS MODULAR ENCLOSURE 20 FT WIDE x 11 FT HIGH x 32 FT LONG ONE DOUBLE DOOR & ONE MAN DOOR    A/C, LIGHTS & RECEPTACLES			
<b>POWER DESIGN INC.</b> ODELL, OREGON			
DRAWN: BB	PAGE	DATE 8-9-06	DRAWING NO. 3535

FILE REF: