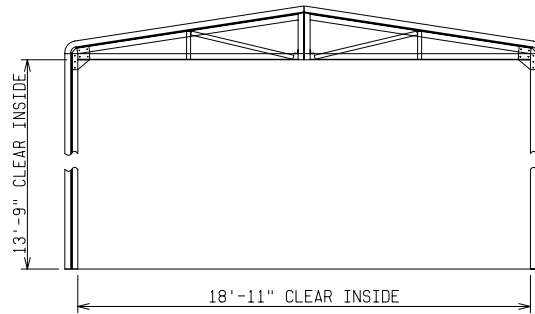
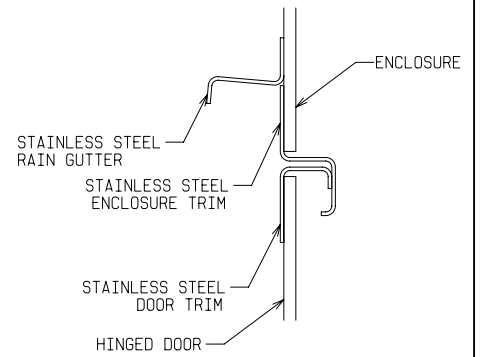


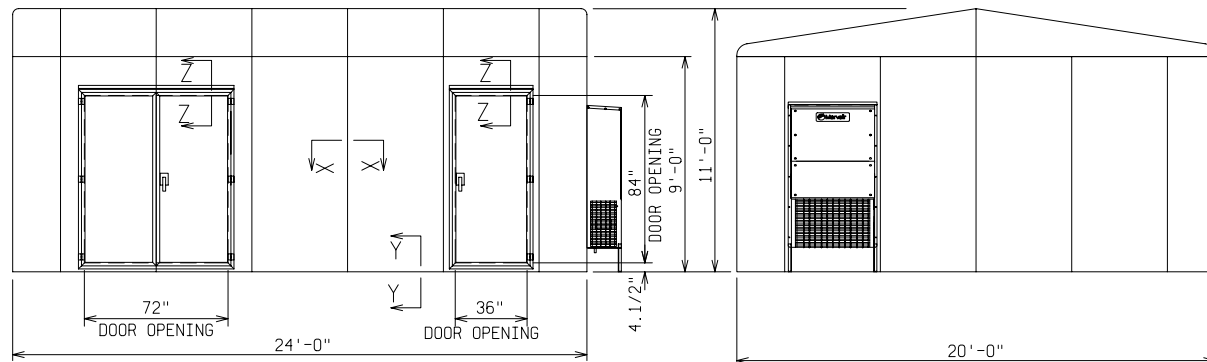
PLAN VIEW



SECTION W-W

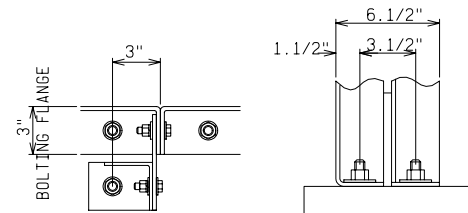


SECTION Z-Z



FRONT VIEW

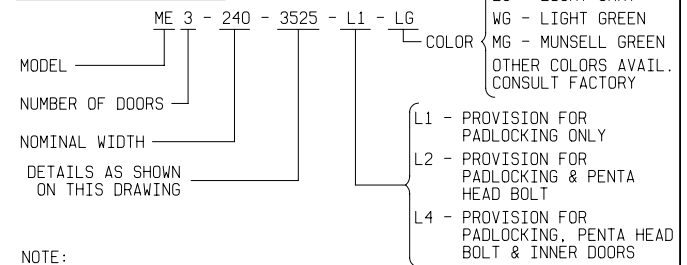
END VIEW



SECTION X-X

SECTION Y-Y

ORDERING INFORMATION:



NOTE:

1. MATERIAL:
 - 1) FIBERGLASS LAMINATE 1/4" NOMINAL THICKNESS
 - 2) EXTERIOR UV STABILIZED GELCOAT - 14 MIL NOMINAL THICKNESS
 - 3) FIRE RETARDANT - DOES NOT SUPPORT COMBUSTION
 - 4) STAINLESS STEEL HARDWARE
2. STANDARDS:
 - 1) CERTIFIED TEST DATA OF ASTM STRUCTURAL STANDARDS AVAILABLE UPON REQUEST

FIBERGLASS MODULAR ENCLOSURE 20 FT WIDE x 11 FT HIGH x 24 FT LONG ONE DOUBLE & ONE SINGLE DOOR A/C, LIGHTS & RECEPTACLES			
POWER DESIGN INC. ODELL, OREGON			
DRAWN: BB	PAGE	DATE 8-25-06	DRAWING NO. 3525

FILE REF: