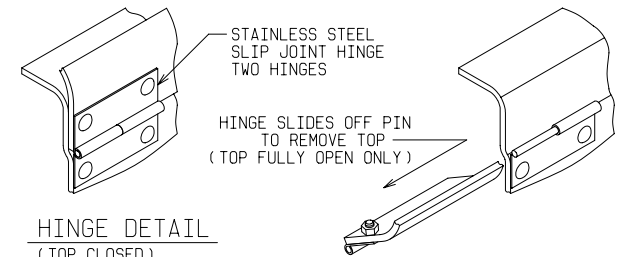
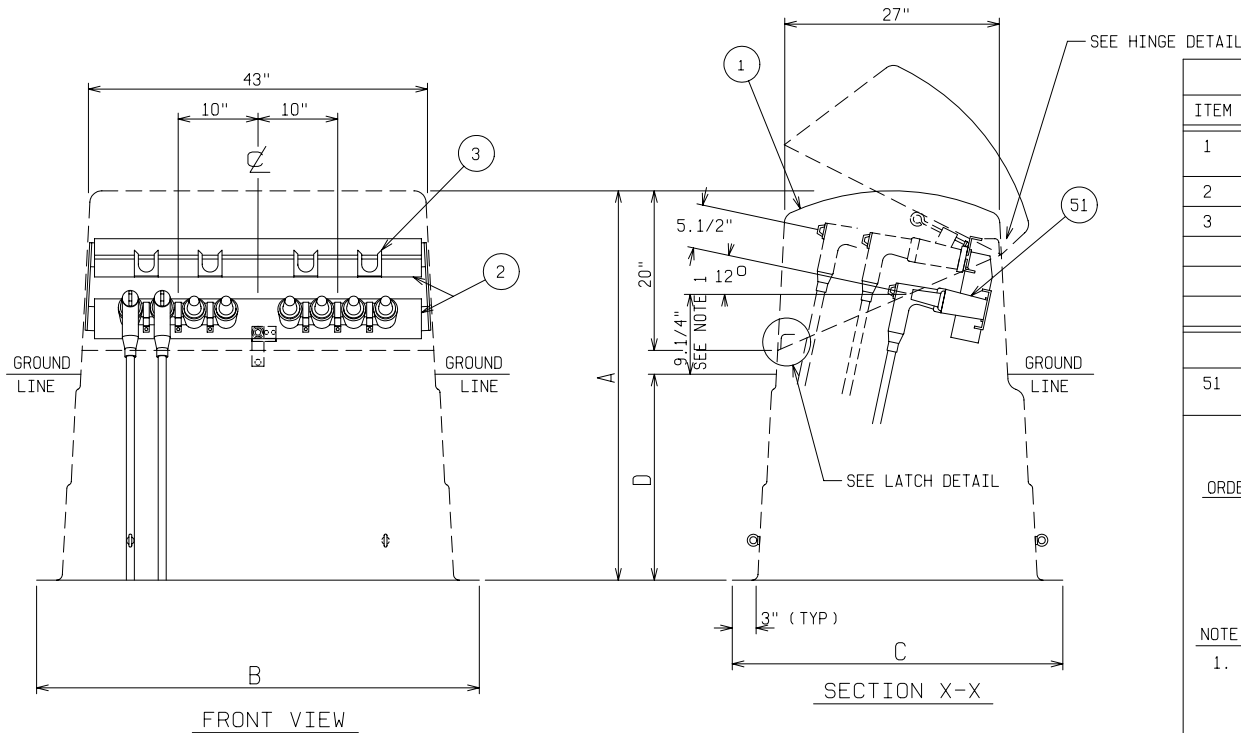


LATCH DETAIL



HINGE DETAIL
(TOP CLOSED)
TWO PLACES

HINGE DETAIL
(TOP OPEN)
TWO PLACES



MATERIAL LIST - STANDARD UNIT

| ITEM | DESCRIPTION |
|------|--|
| 1 | POWER DESIGN INC MODEL NO CJP-15/A FIBERGLASS CABLE JUNCTION PEDESTAL - STANDARD LIGHT GREEN |
| 2 | ALUMINUM JUNCTION MOUNTING BAR AND PARKING CLIP MOUNTING RAILS |
| 3 | ADJUSTABLE LOCATION STAINLESS STEEL PARKING CLIPS |
| | |
| | |
| | |

OPTIONAL EQUIPMENT

| | |
|----|--|
| 51 | 200 AMP LOADBREAK JUNCTION - 15KV OR 25KV - 95/125KV BIL - SPECIFY VOLTAGE, MANUFACTURER AND 2, 3 OR 4-WAY |
|----|--|

ORDERING INFORMATION:

USER SHOULD SELECT "D", BURIAL DEPTH, DESIRED.
SPECIFY "A", OVERALL HEIGHT, AS A SUFFIX TO THE BASIC PART NO.
i.e.: CJP-15/A-49 = 49" OVERALL HEIGHT
9.1/4" TERMINAL HEIGHT MAY BE INCREASED BY DECREASING BURIAL DEPTH OR ORDERING THE NEXT SIZE GREATER "A" DIMENSION.

NOTE:

- MATERIAL:
 - FIBERGLASS LAMINATE 3/16" NOMINAL THICKNESS
 - EXTERIOR UV STABILIZED GELCOAT - 14 MIL NOMINAL THICKNESS
 - FIRE RETARDANT - DOES NOT SUPPORT COMBUSTION
 - TYPE 316 STAINLESS STEEL HARDWARE
- MOUNTING BAR WILL WITHSTAND A MINIMUM 400 LB. LOADING TO INSTALL OR REMOVE ELBOWS.

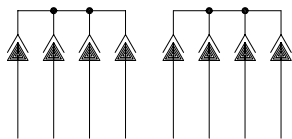
DEADFRONT CABLE JUNCTION PEDESTAL

15/25KV 200 AMP 95/125KV BIL
TWO PHASE 2, 3 OR 4-WAY LOADBREAK JUNCTION



| DRAWN: | PAGE | DATE | DRAWING NO. |
|--------|------|---------|-------------|
| BB | | 3-29-04 | 3315 |

| MODEL No. | OVERALL HEIGHT | OVERALL WIDTH AT BOTTOM | OVERALL DEPTH AT BOTTOM | MAXIMUM RECOMMENDED BURIAL DEPTH SEE NOTE 1 |
|-------------|----------------|-------------------------|-------------------------|---|
| | A | B | C | D |
| CJP-15/A-33 | 33" | 54.1/2" | 40.1/4" | 12" |
| CJP-15/A-39 | 39" | 55.1/4" | 41" | 18" |
| CJP-15/A-49 | 49" | 57.1/4" | 43" | 28" |
| CJP-15/A-54 | 54" | 58.3/4" | 44.1/2" | 33" |



SCHEMATIC

FILE REF: