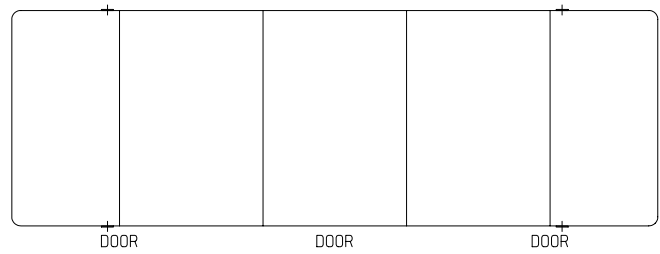
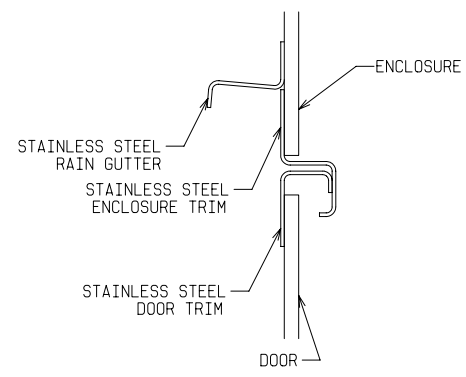


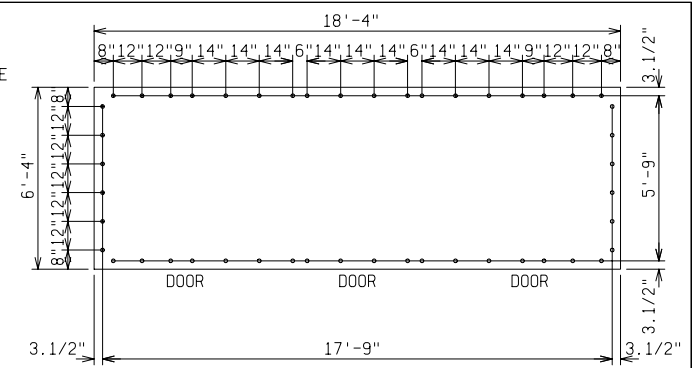
DETAIL A



TOP VIEW

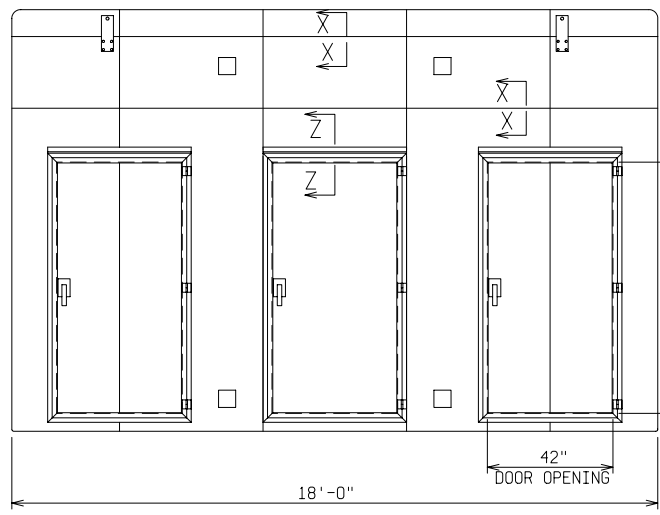


SECTION Z-Z

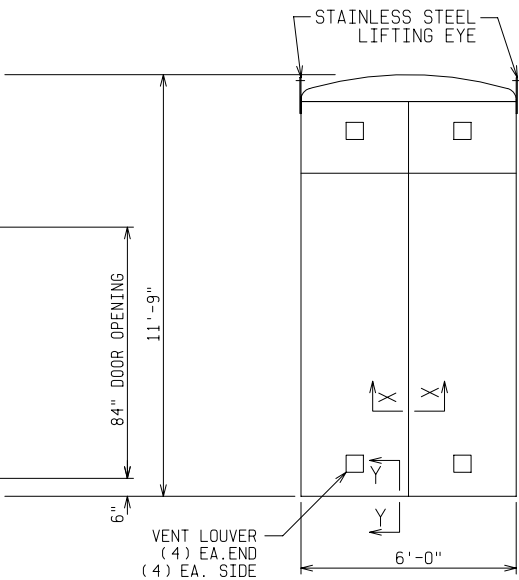


PAD & ANCHOR BOLT DETAIL

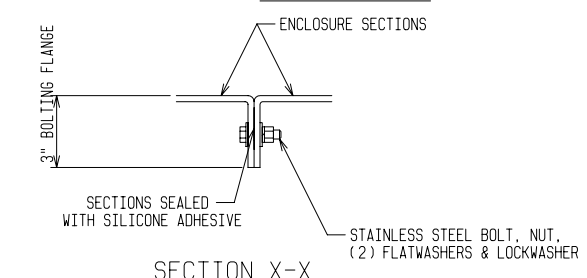
ANCHOR BOLTS TO BE 5/8" DIA. AND TO EXTEND 1-1/2" MINIMUM ABOVE PAD  
 PROVIDE CABLE ENTRY AS REQUIRED



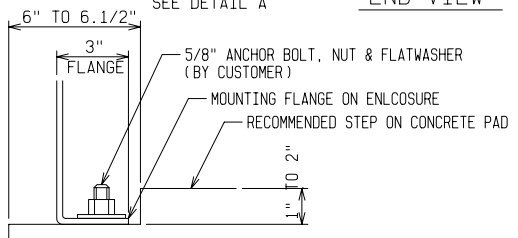
FRONT VIEW



END VIEW

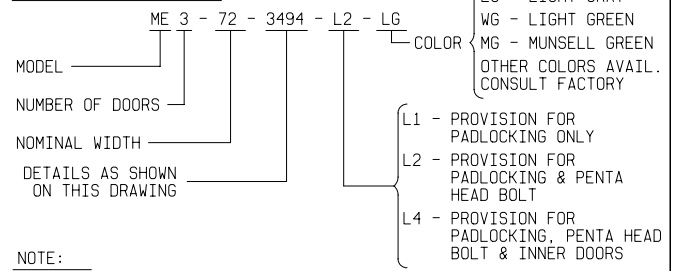


SECTION X-X



SECTION Y-Y

ORDERING INFORMATION:



NOTE:

- MATERIAL:
  - FIBERGLASS LAMINATE 1/4" NOMINAL THICKNESS
  - EXTERIOR UV STABILIZED GELCOAT - 14 MIL NOMINAL THICKNESS
  - FIRE RETARDANT - DOES NOT SUPPORT COMBUSTION
  - STAINLESS STEEL HARDWARE
- STANDARDS:
  - CERTIFIED TEST DATA OF ASTM STRUCTURAL STANDARDS AVAILABLE UPON REQUEST

FIBERGLASS MODULAR ENCLOSURE  
 6 FT WIDE x 11 FT 9 IN HIGH x 18 FT LONG  
 (3) ACCESS DOORS

**POWER DESIGN INC.**  
 ODELL, OREGON

DRAWN: BB	PAGE	DATE 4-4-03	DRAWING NO. 3494
--------------	------	----------------	---------------------

FILE REF: