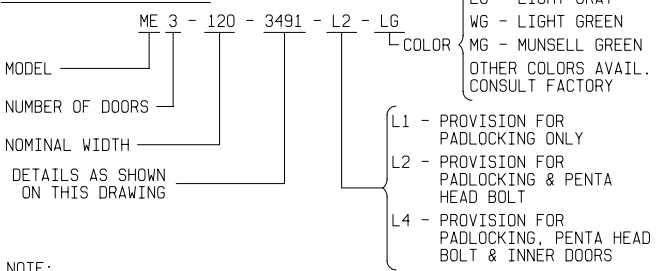


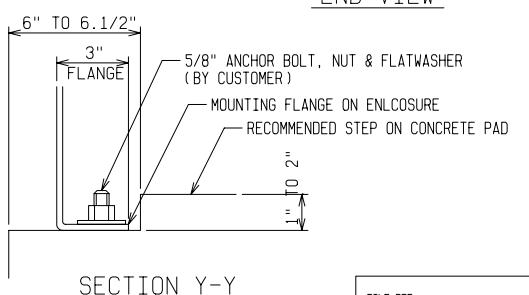
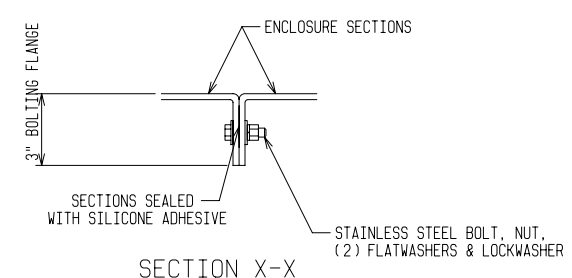
PAD & DETAIL BOLT DETAIL
 ANCHOR BOLTS TO BE 5/8" DIA. & TO EXTEND 1-1/2" MINIMUM ABOVE PAD.
 PROVIDE UTILITY ENTRY AS REQUIRED.

ORDERING INFORMATION:



NOTE:

- MATERIAL:**
 - FIBERGLASS LAMINATE 1/4" NOMINAL THICKNESS
 - EXTERIOR UV STABILIZED GELCOAT - 14 MIL NOMINAL THICKNESS
 - FIRE RETARDANT - DOES NOT SUPPORT COMBUSTION
 - STAINLESS STEEL HARDWARE
- STANDARDS:**
 - CERTIFIED TEST DATA OF ASTM STRUCTURAL STANDARDS AVAILABLE UPON REQUEST



FIBERGLASS MODULAR ENCLOSURE
 10 FT WIDE x 9 FT 5 IN HIGH x 26 FT LONG
 ONE MAN DOOR & ONE DOUBLE DOOR TWO EXHAUST FANS

POWER DESIGN INC.
 ODELL, OREGON

| | | | |
|-----------|------|--------------|------------------|
| DRAWN: BB | PAGE | DATE 4-21-03 | DRAWING NO. 3491 |
|-----------|------|--------------|------------------|

FILE REF: