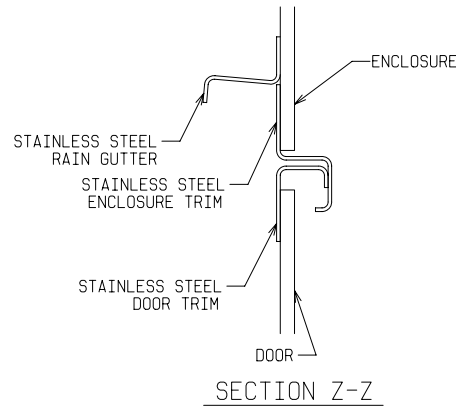
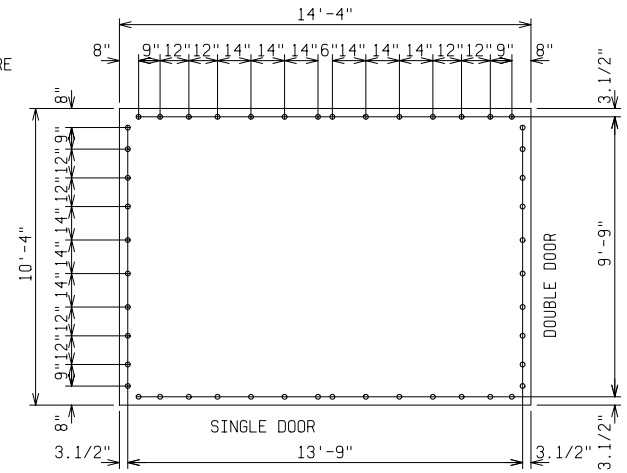


PLAN VIEW

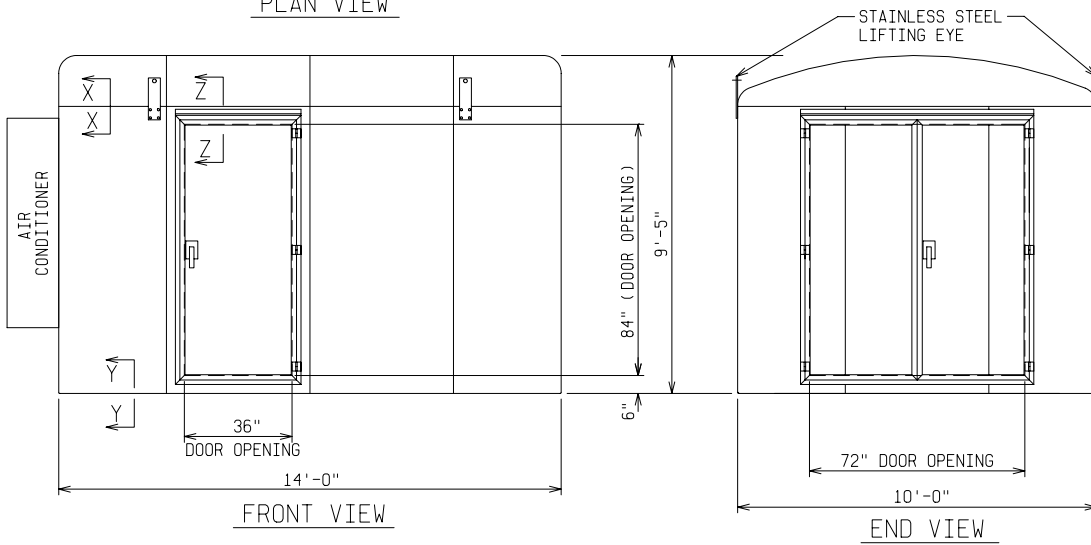


SECTION Z-Z



PAD & DETAIL BOLT DETAIL

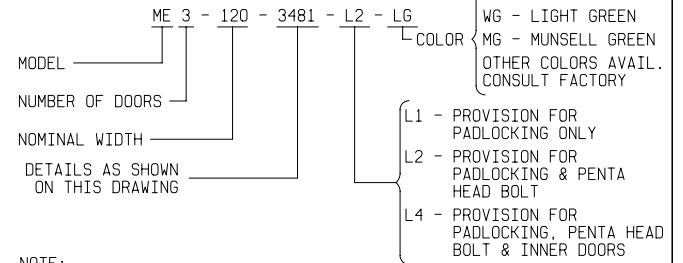
ANCHOR BOLTS TO BE 5/8" DIA. & TO EXTEND 1-1/2" MINIMUM ABOVE PAD. PROVIDE UTILITY ENTRY AS REQUIRED.



FRONT VIEW

END VIEW

ORDERING INFORMATION:



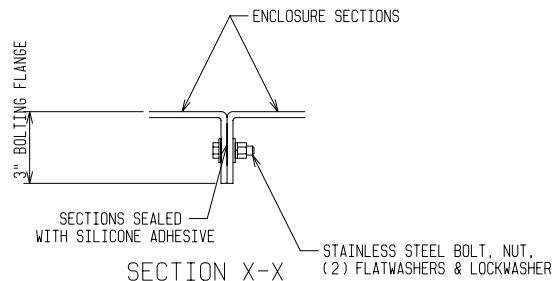
NOTE:

1. MATERIAL:

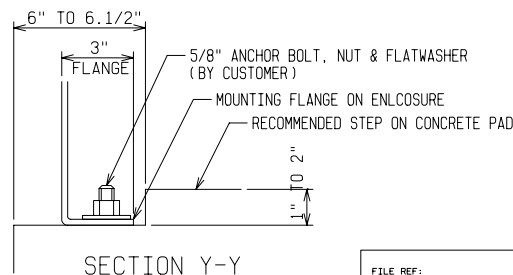
- 1) FIBERGLASS LAMINATE 1/4" NOMINAL THICKNESS
- 2) EXTERIOR UV STABILIZED GELCOAT - 14 MIL NOMINAL THICKNESS
- 3) FIRE RETARDANT - DOES NOT SUPPORT COMBUSTION
- 4) STAINLESS STEEL HARDWARE

2. STANDARDS:

- 1) CERTIFIED TEST DATA OF ASTM STRUCTURAL STANDARDS AVAILABLE UPON REQUEST



SECTION X-X



SECTION Y-Y

<p>FIBERGLASS MODULAR ENCLOSURE</p> <p>10 FT WIDE x 9 FT 5 IN HIGH x 14 FT LONG</p> <p>ONE MAN & ONE DOUBLE DOOR AIR CONDITIONER LIGHTS, BREAKER PANEL</p>			
<p>POWER DESIGN INC.</p> <p>ODELL, OREGON</p>			
DRAWN: BB	PAGE	DATE 6-4-03	DRAWING NO. 3481

FILE REF: