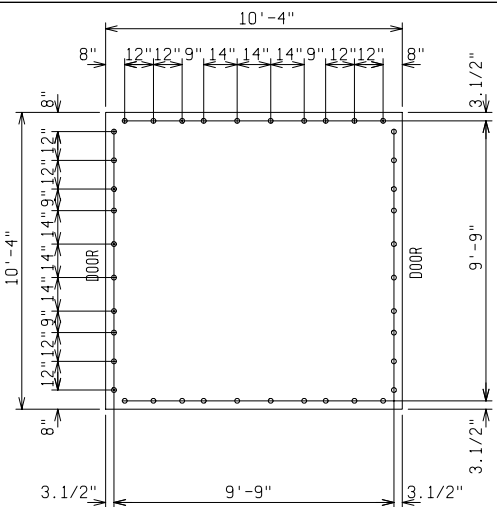


TOP VIEW

SECTION Z-Z

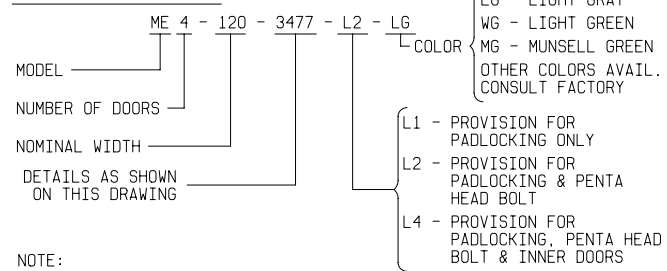
DETAIL A



PAD & DETAIL BOLT DETAIL

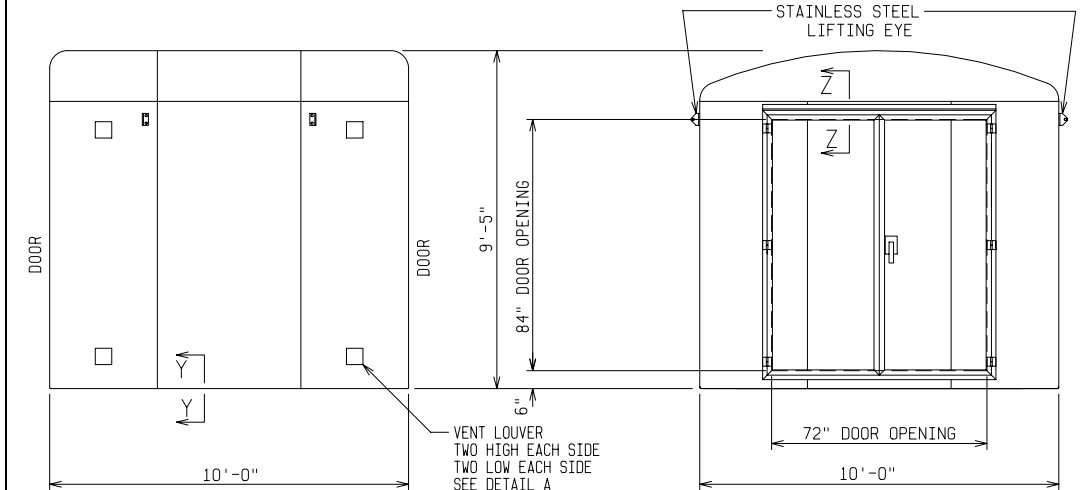
ANCHOR BOLTS TO BE 5/8" DIA. & TO EXTEND 1-1/2" MINIMUM ABOVE PAD. PROVIDE UTILITY ENTRY AS REQUIRED.

ORDERING INFORMATION:



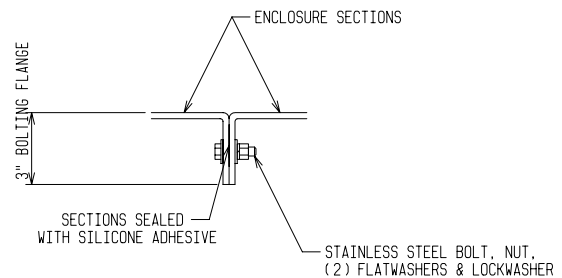
NOTE:

- MATERIAL:
  - FIBERGLASS LAMINATE 1/4" NOMINAL THICKNESS
  - EXTERIOR UV STABILIZED GELCOAT - 14 MIL NOMINAL THICKNESS
  - FIRE RETARDANT - DOES NOT SUPPORT COMBUSTION
  - STAINLESS STEEL HARDWARE
- STANDARDS:
  - CERTIFIED TEST DATA OF ASTM STRUCTURAL STANDARDS AVAILABLE UPON REQUEST

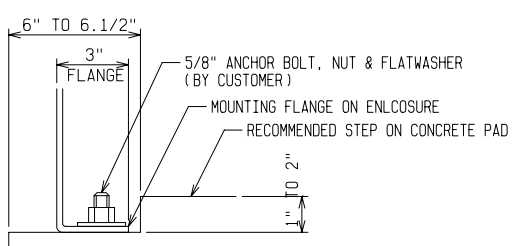


FRONT VIEW

END VIEW



SECTION X-X



SECTION Y-Y

FIBERGLASS MODULAR ENCLOSURE  
 10 FT WIDE x 9 FT 5 IN HIGH x 10 FT LONG  
 TWO DOUBLE DOORS



DRAWN: BB	PAGE	DATE 6-4-03	DRAWING NO. 3477
--------------	------	----------------	---------------------

FILE REF: