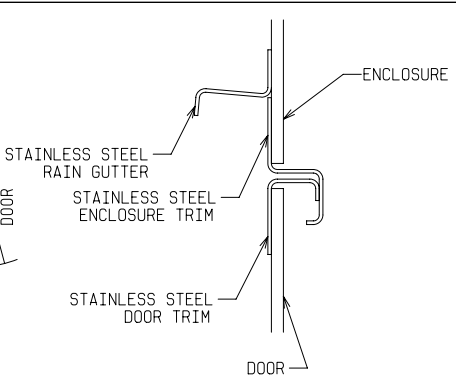
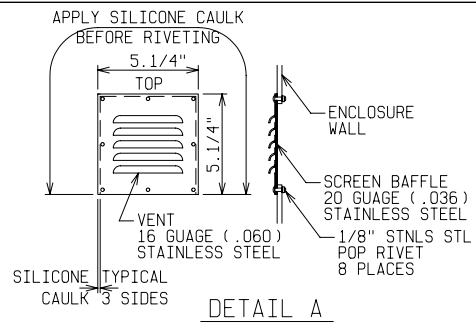


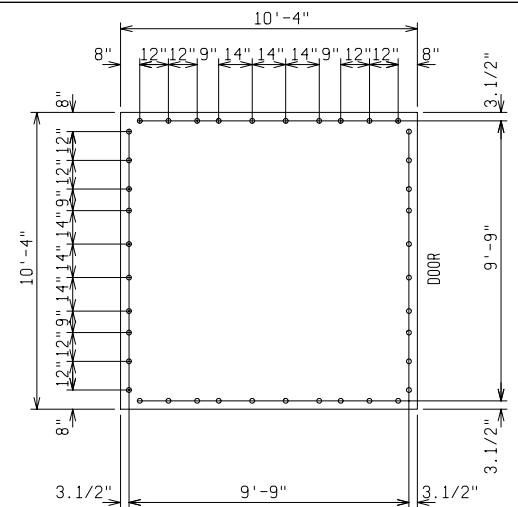
TOP VIEW



SECTION Z-Z

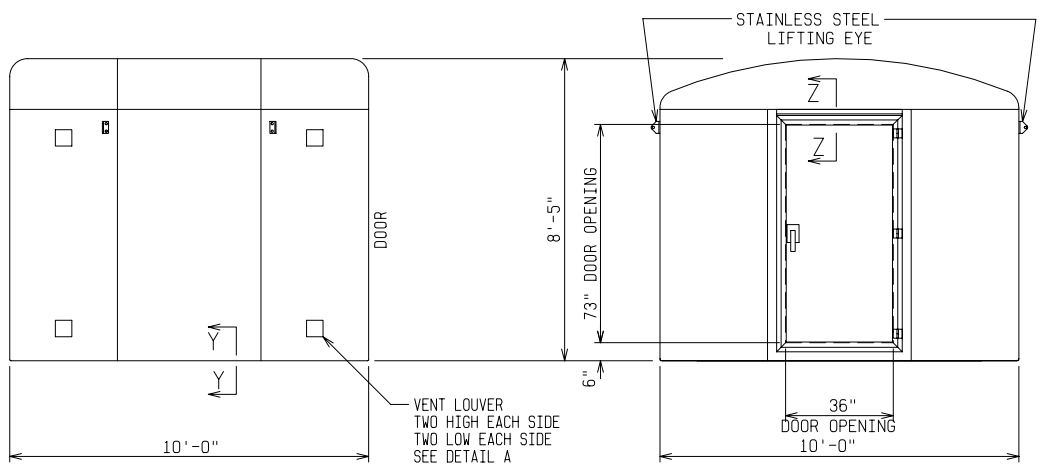


DETAIL A



PAD & DETAIL BOLT DETAIL

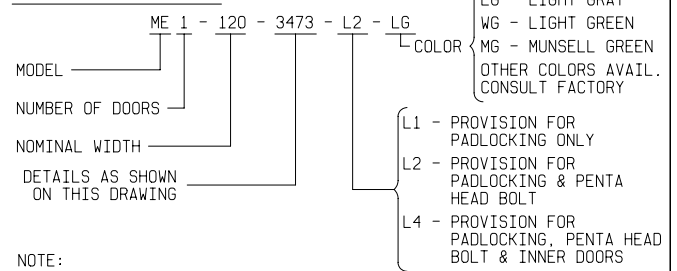
ANCHOR BOLTS TO BE 5/8" DIA. & TO EXTEND 1-1/2" MINIMUM ABOVE PAD. PROVIDE UTILITY ENTRY AS REQUIRED.



FRONT VIEW

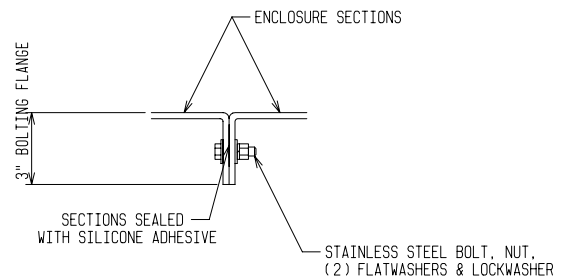
END VIEW

ORDERING INFORMATION:

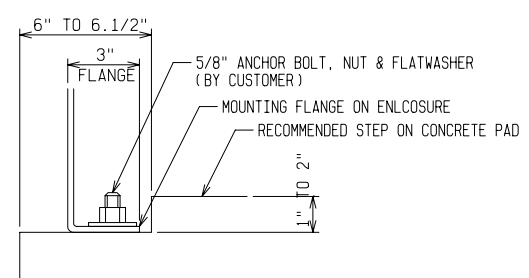


NOTE:

- MATERIAL:
 - FIBERGLASS LAMINATE 1/4" NOMINAL THICKNESS
 - EXTERIOR UV STABILIZED GELCOAT - 14 MIL NOMINAL THICKNESS
 - FIRE RETARDANT - DOES NOT SUPPORT COMBUSTION
 - STAINLESS STEEL HARDWARE
- STANDARDS:
 - CERTIFIED TEST DATA OF ASTM STRUCTURAL STANDARDS AVAILABLE UPON REQUEST



SECTION X-X



SECTION Y-Y

FIBERGLASS MODULAR ENCLOSURE
10 FT WIDE x 8 FT 5 IN HIGH x 10 FT LONG
ONE 36" MAN DOOR

POWER DESIGN INC.
ODELL, OREGON

DRAWN: BB	PAGE	DATE 6-4-03	DRAWING NO. 3473
--------------	------	----------------	---------------------

FILE REF: