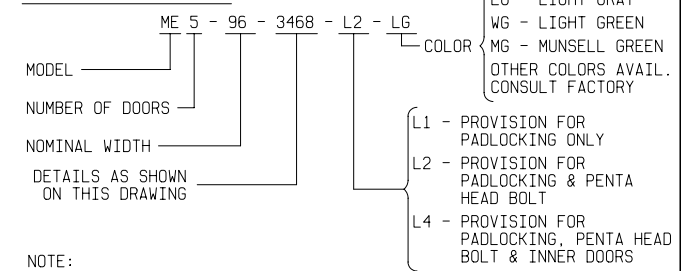


PAD & DETAIL BOLT DETAIL

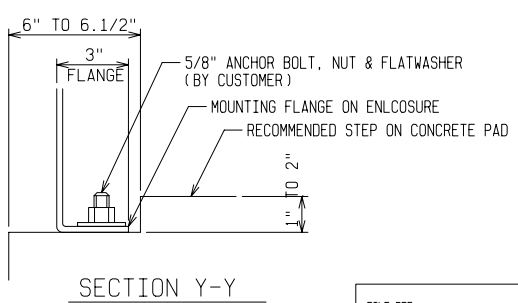
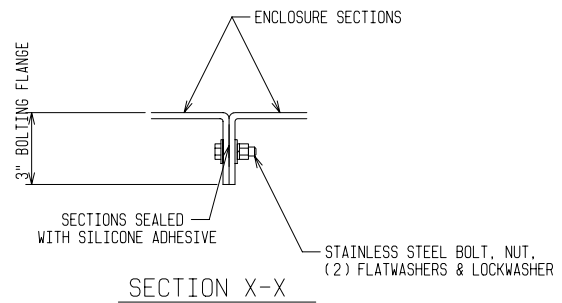
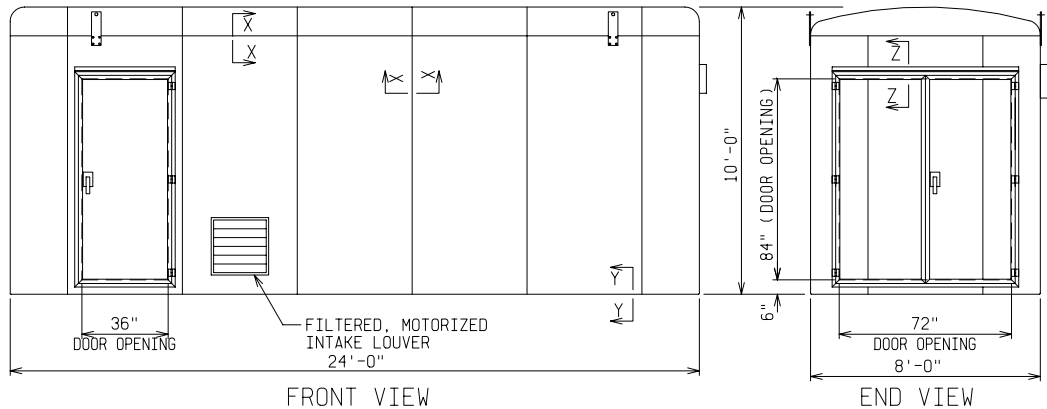
ANCHOR BOLTS TO BE 5/8" DIA. & TO EXTEND 1-1/2" MINIMUM ABOVE PAD. PROVIDE UTILITY ENTRY AS REQUIRED.

ORDERING INFORMATION:



NOTE:

1. MATERIAL:
 - 1) FIBERGLASS LAMINATE 1/4" NOMINAL THICKNESS
 - 2) EXTERIOR UV STABILIZED GELCOAT - 14 MIL NOMINAL THICKNESS
 - 3) FIRE RETARDANT - DOES NOT SUPPORT COMBUSTION
 - 4) STAINLESS STEEL HARDWARE
2. STANDARDS:
 - 1) CERTIFIED TEST DATA OF ASTM STRUCTURAL STANDARDS AVAILABLE UPON REQUEST



FIBERGLASS MODULAR ENCLOSURE
 8 FT WIDE x 10'-0" HIGH x 24 FT LONG
 ONE SINGLE & TWO DOUBLE DOOR LIGHTS, INTAKE LOUVER, EXHAUST FAN



DRAWN: BB	PAGE	DATE 5-4-03	DRAWING NO. 3468
--------------	------	----------------	---------------------

FILE REF: