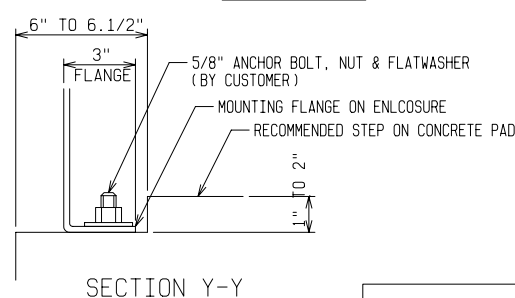
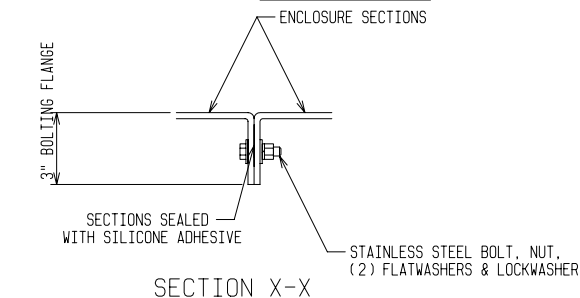
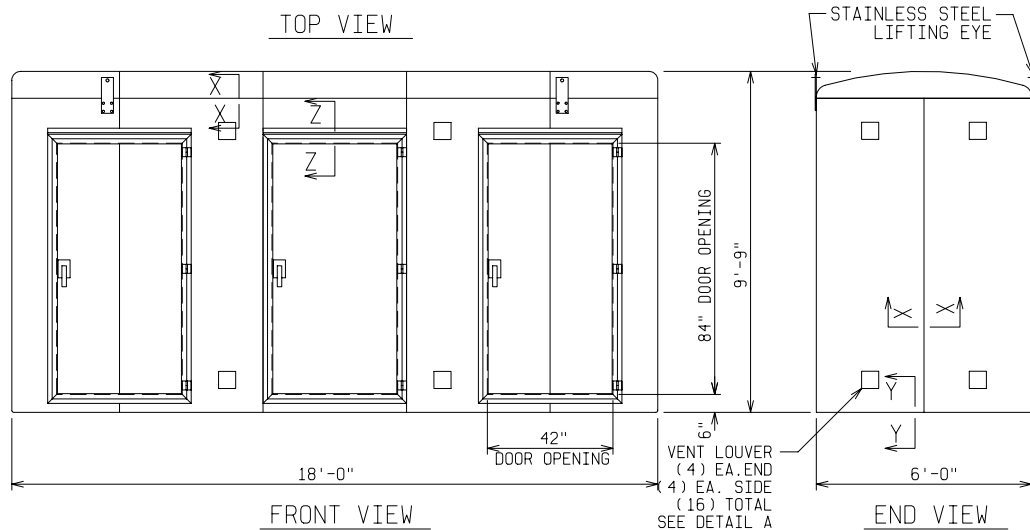
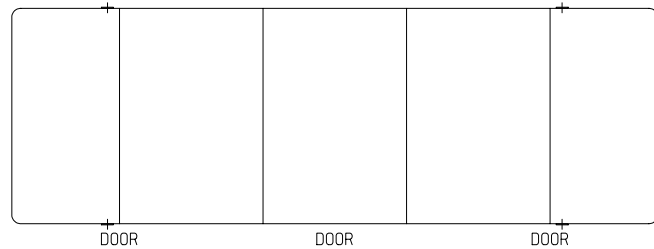
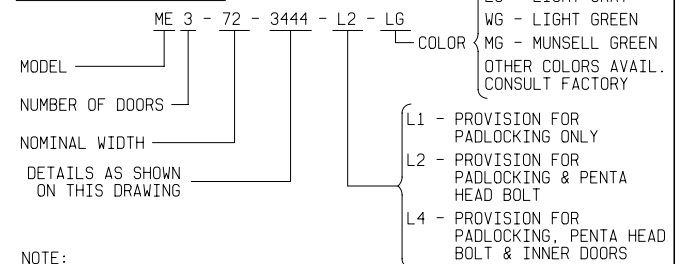


**PAD & ANCHOR BOLT DETAIL**

ANCHOR BOLTS TO BE 5/8" DIA. AND TO EXTEND 1-1/2" MINIMUM ABOVE PAD  
 PROVIDE CABLE ENTRY AS REQUIRED



**ORDERING INFORMATION:**



**NOTE:**

- MATERIAL:**
  - FIBERGLASS LAMINATE 1/4" NOMINAL THICKNESS
  - EXTERIOR UV STABILIZED GELCOAT - 14 MIL NOMINAL THICKNESS
  - FIRE RETARDANT - DOES NOT SUPPORT COMBUSTION
  - STAINLESS STEEL HARDWARE
- STANDARDS:**
  - CERTIFIED TEST DATA OF ASTM STRUCTURAL STANDARDS AVAILABLE UPON REQUEST

FIBERGLASS MODULAR ENCLOSURE

6 FT WIDE x 9 FT 9 IN HIGH x 18 FT LONG

(3) ACCESS DOORS



**POWER DESIGN INC.**

ODELL, OREGON

DRAWN: BB	PAGE	DATE 4-4-03	DRAWING NO. 3444
--------------	------	----------------	---------------------

FILE REF: