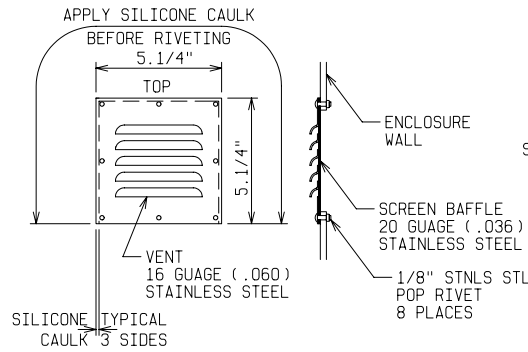
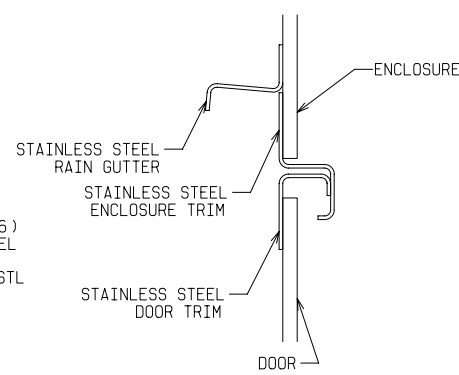


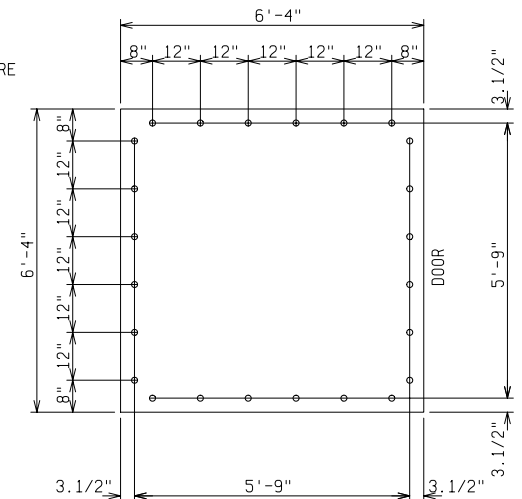
TOP VIEW



DETAIL A



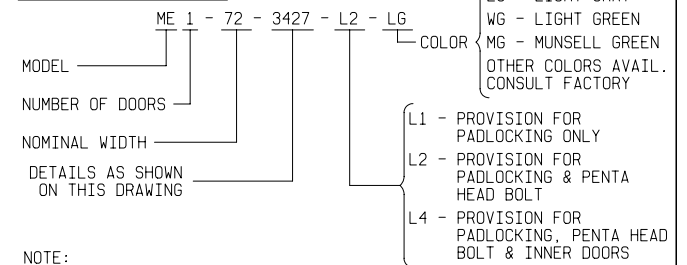
SECTION Z-Z



PAD & ANCHOR BOLT DETAIL

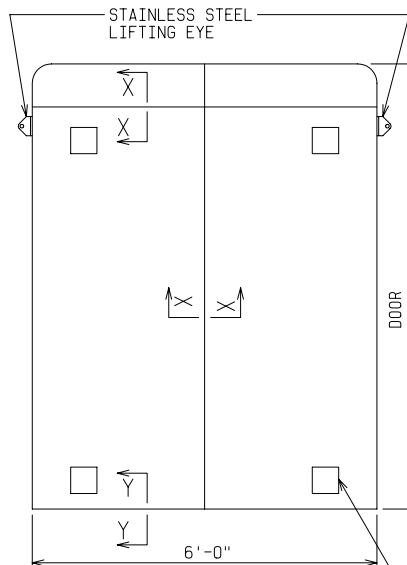
ANCHOR BOLTS TO BE 5/8" DIA. AND TO EXTEND 1-1/2" MINIMUM ABOVE PAD
PROVIDE UTILITY ENTRY AS REQUIRED

ORDERING INFORMATION:

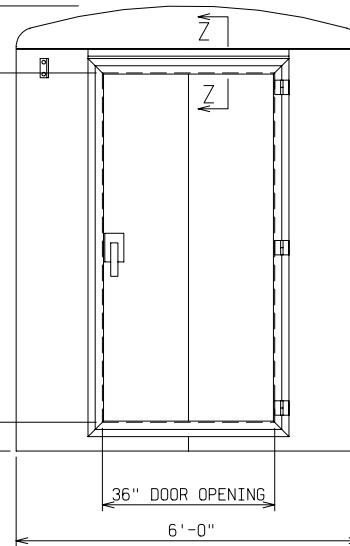


NOTE:

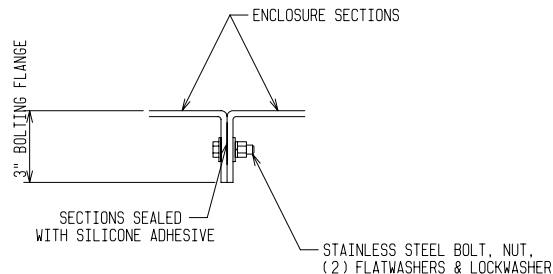
- MATERIAL:**
 - FIBERGLASS LAMINATE 1/4" NOMINAL THICKNESS
 - EXTERIOR UV STABILIZED GELCOAT - 14 MIL NOMINAL THICKNESS
 - FIRE RETARDANT - DOES NOT SUPPORT COMBUSTION
 - STAINLESS STEEL HARDWARE
- STANDARDS:**
 - CERTIFIED TEST DATA OF ASTM STRUCTURAL STANDARDS AVAILABLE UPON REQUEST



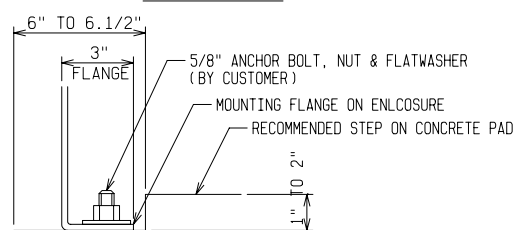
FRONT VIEW



END VIEW



SECTION X-X



SECTION Y-Y

FIBERGLASS WALK-IN ENCLOSURE

6 FT WIDE x 7 FT 9 IN HIGH x 6 FT LONG

ONE ENTRY DOOR



POWER DESIGN INC.

ODELL, OREGON

| | | | |
|--------------|------|----------------|---------------------|
| DRAWN: BB | PAGE | DATE 4-4-03 | DRAWING NO. 3427 |
|--------------|------|----------------|---------------------|

FILE REF: