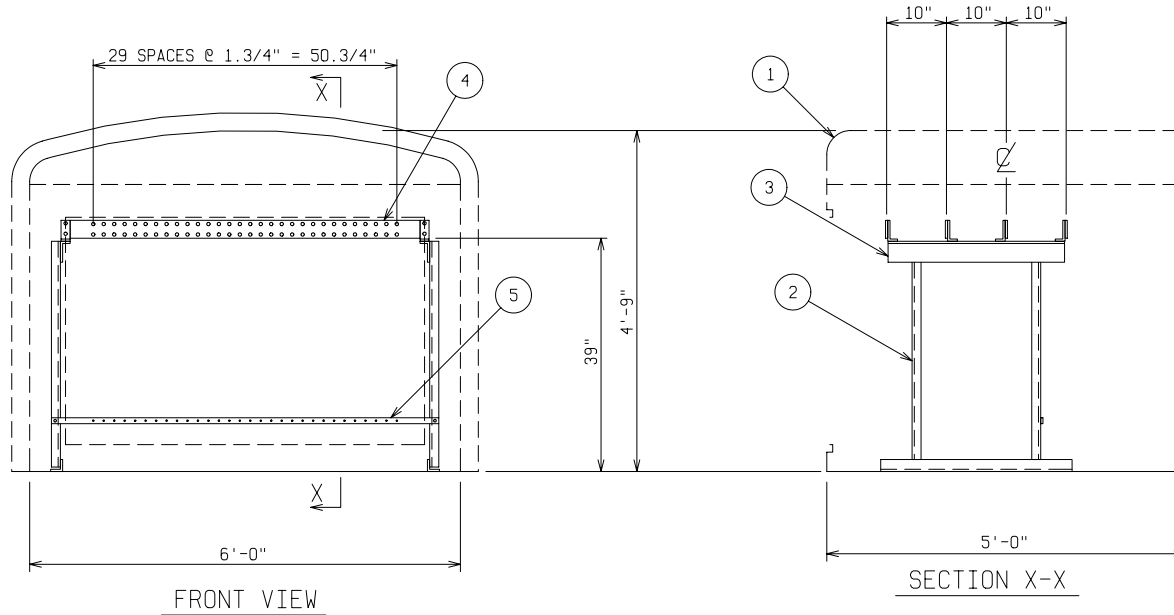


**PAD & ANCHOR BOLT DETAIL**

ANCHOR BOLTS TO BE 5/8" DIA. AND TO EXTEND  
1-1/2" MINIMUM ABOVE PAD  
PROVIDE UTILITY ENTRY AS REQUIRED



**MATERIAL LIST - STANDARD UNIT**

ITEM	DESCRIPTION
1	FIBERGLASS MODULAR BUILDING - 3 DOOR - MUNSELL GREEN - STAINLESS STEEL HARDWARE - OPEN ONE SIDE W/ 3" FLG - PDI MODEL ME2-72-1987-L2-MG
2	GALVANIZED STEEL FREE-STANDING FRAME
3	FIBERGLASS ANGLE INSULATOR - GPO-3
4	1/4" x 3" COPPER BUS BARS - 30 POSITION - NEMA 2 HOLE DRILLING
5	1/4" x 1" COPPER GROUND BUS - 30 POSITION - #10-32 TAPPED HOLES

CATALOG NO: ME2-72-1987-L2-MG

PADMOUNT SECONDARY TERMINAL BUS

600V 900 AMP (30) NEMA 2 HOLE

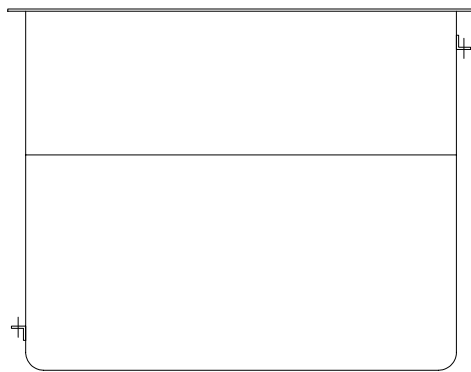
THREE PHASE (1) 1/4" x 3" COPPER BUS PER PHASE + NEUTRAL



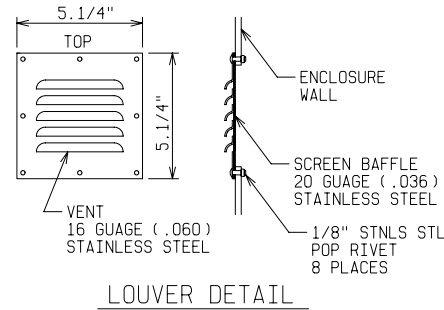
**POWER DESIGN INC.**  
ODELL, OREGON

DRAWN: BB	PAGE 1 OF 2	DATE 3-13-01	DRAWING NO. 1987
--------------	----------------	-----------------	---------------------

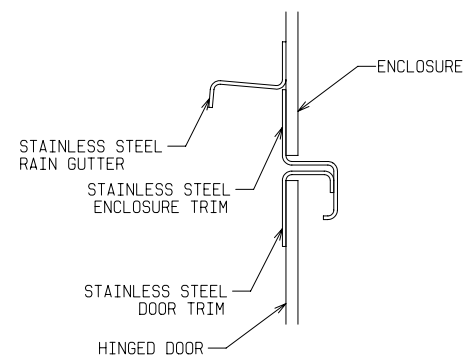
FILE REF:



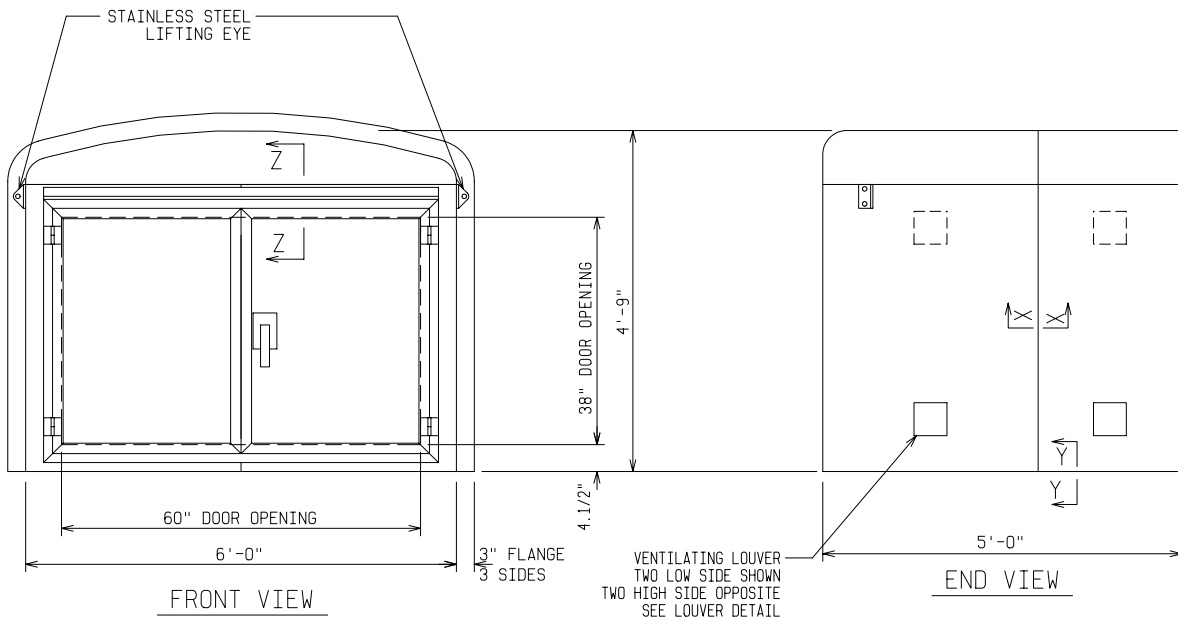
DOOR  
TOP VIEW



LOUVER DETAIL



SECTION Z-Z

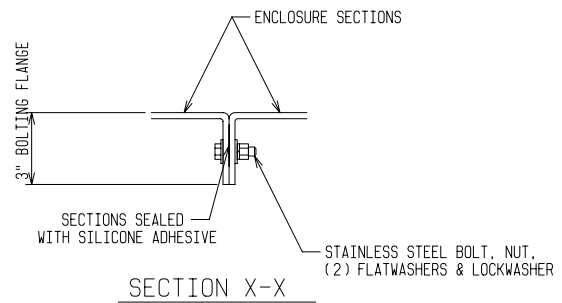


FRONT VIEW

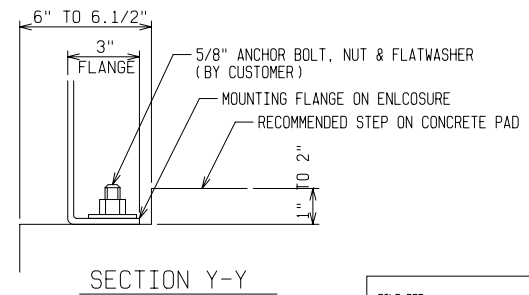
END VIEW

NOTE:

1. MATERIAL:
  - 1) FIBERGLASS LAMINATE 1/4" NOMINAL THICKNESS
  - 2) EXTERIOR UV STABILIZED GELCOAT - 14 MIL NOMINAL THICKNESS
  - 3) FIRE RETARDANT - DOES NOT SUPPORT COMBUSTION
  - 4) TYPE 316 STAINLESS STEEL HARDWARE
2. STANDARDS:
  - 1) CERTIFIED TEST DATA OF ASTM STRUCTURAL STANDARDS AVAILABLE UPON REQUEST



SECTION X-X



SECTION Y-Y

CATALOG NO: ME4-72-1987-L2-MG

PADMOUNT SECONDARY TERMINAL BUS  
6 FT WIDE x 4 FT 9 IN HIGH x 5 FT LONG  
ONE DOUBLE DOOR

**POWER DESIGN INC.**  
ODELL, OREGON

DRAWN: BB	PAGE 2 OF 2	DATE 10-30-03	DRAWING NO. 1987
--------------	----------------	------------------	---------------------

FILE REF: