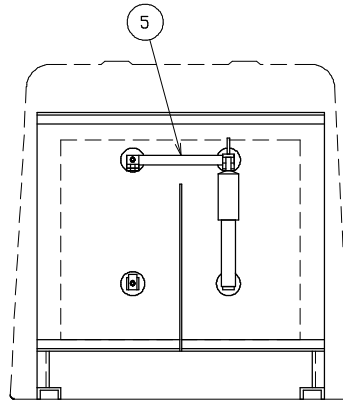
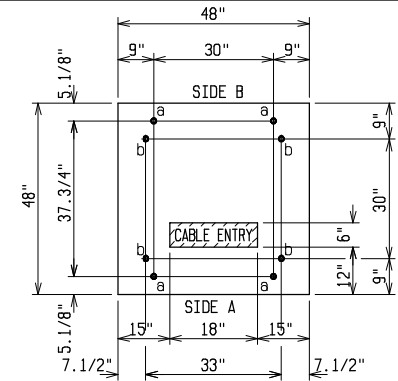


TOP VIEW

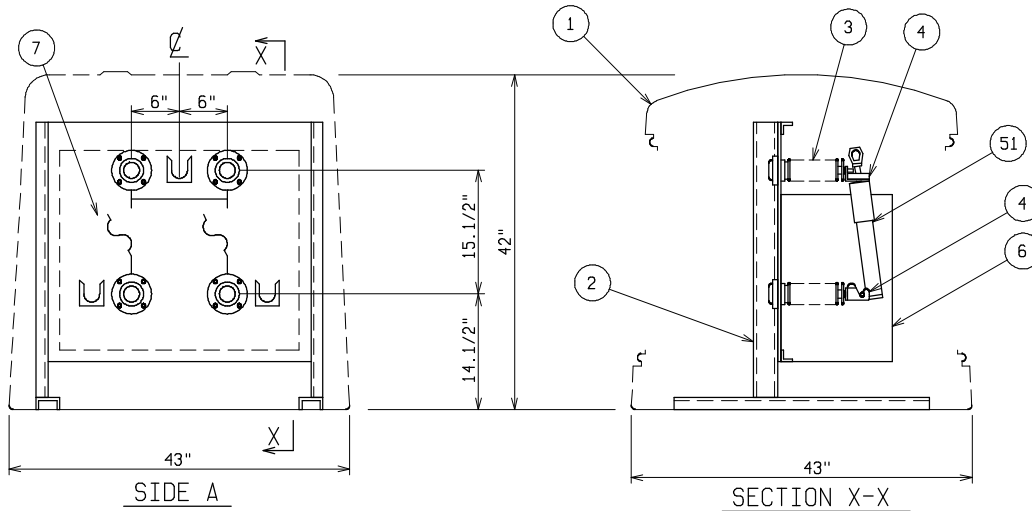


SIDE B



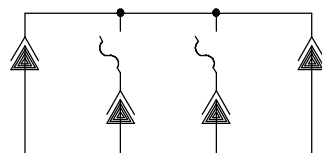
PAD AND ANCHOR BOLT DIMENSIONS

ANCHOR BOLTS TO BE 5/8" DIA. AND TO EXTEND: a = 1.1/2" MIN.
 b = 2.1/2" MIN.
 PROVIDE CABLE ENTRY AS REQUIRED.



SIDE A

SECTION X-X



SCHEMATIC

MATERIAL LIST - STANDARD UNIT

ITEM	DESCRIPTION
1	FIBERGLASS EQUIPMENT ENCLOSURE - 2 DOOR - STANDARD LIGHT GREEN STAINLESSSTEEL HARDWARE - PDI MODEL PE2-43-0-L2 WITH ONE INNER DOOR
2	GALVANIZED STEEL FREE STANDING FRAME
3	CABLE TO AIR BUSHING WELL - 25KV - 125KV BIL - 200 AMP
4	COOPER POWER ARC STRANGLER NX FUSE MOUNTING - 15.5KV - MTG. CODE 2
5	1/8" x 1" COPPER BUS
6	3/16" GLASTIC BARRIER
7	SCHEMATIC DIAGRAM TAPED & STENCILED ON FRONT PLATE

OPTIONAL EQUIPMENT

51	COOPER POWER ARC STRANGLER NX FUSE - 15.5KV - MOUNTING CODE 2 SPECIFY AMPERE FUSE REQUIRED (40 AMP MAXIMUM)
----	--

SWITCHGEAR - DEADFRONT

15KV 200 AMP 125KV BIL

SINGLE PHASE LOADBREAK LOOP FEED WITH (2) LOADBREAK FUSED TAP



POWER DESIGN INC.

ODELL, OREGON

DRAWN:	PAGE	DATE	DRAWING NO.
BB		2-12-98	1511

FILE REF: