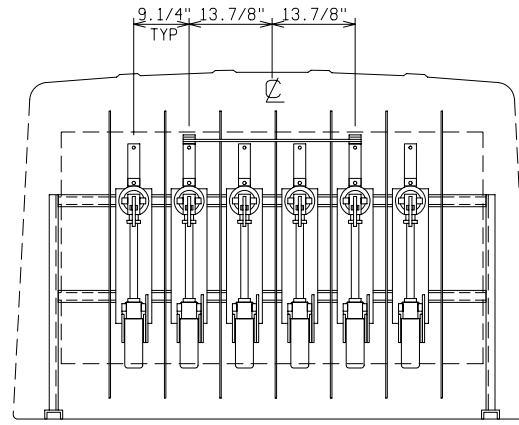
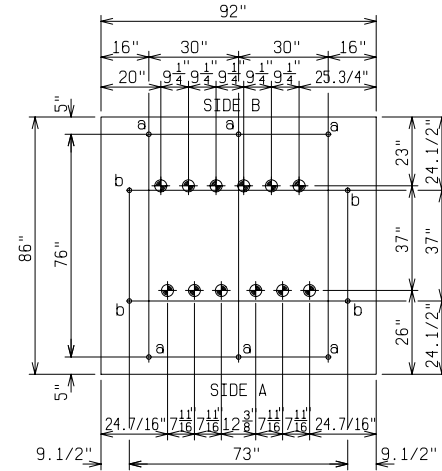


TOP VIEW



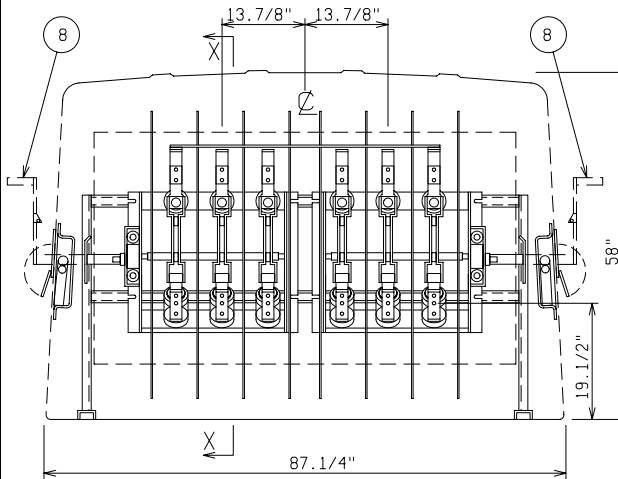
SIDE B



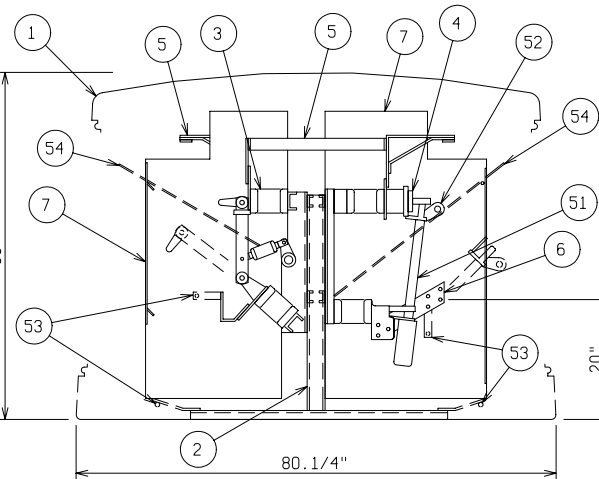
**PAD & ANCHOR BOLT DETAILS**

ANCHOR BOLTS TO BE 5/8" DIA. & TO EXTEND:  
 a = 1-1/2" MINIMUM  
 b = 2-1/2" MINIMUM  
 PROVIDE CABLE ENTRY HOLES AS REQUIRED.

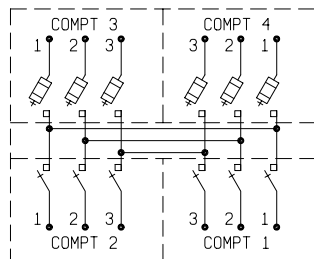
◆ = PROJECTED CABLE TERMINAL POINT



SIDE A



SECTION X-X



SCHEMATIC

**MATERIAL LIST - STANDARD UNIT**

| ITEM | DESCRIPTION  |
|------|--|
| 1    | FIBERGLASS EQUIPMENT ENCLOSURE - 4 DOOR - STANDARD GREEN - STNLS. STL. HARDWARE - PDI MODEL NO. PE4-86-1       |
| 2    | GALVANIZED STEEL FREE-STANDING FRAME   |
| 3    | ELECTRICAL EQUIPMENT INC THREE PHASE AUTO-JET II SWITCH - 15KV 600 AMP - 95KV BIL - 40,000A RMS ASYM.          |
| 4    | ELECTRICAL EQUIPMENT INC TYPE EE-20 AUTO-JET FUSE MOUNTING 15KV - 95KV BIL - 200E AMP MAX. - 20,000A RMS ASYM. |
| 5    | 1/4" x 2" COPPER BUS   |
| 6    | 1/4" x 3" COPPER BUS   |
| 7    | 3/16" GPO-3 BARRIER  |
| 8    | SWITCH OPERATING HANDLE, FIBERGLASS ACCESS DOOR & STORAGE POCKET   |

**OPTIONAL EQUIPMENT**

|    |  |
|----|--|
| 51 | S&C TYPE SMU-20 FUSE UNIT - SPECIFY AMPERE FUSE REQ'D. (200E MAX.) |
| 52 | S&C TYPE SM-20 FUSE END FITTINGS                                   |
| 53 | 5/8" DIA. GROUND STUDS ON SWITCH & FUSE TERMINALS                  |
| 54 | DUAL PURPOSE FRONT COVER BARRIERS IN SWITCH & FUSE COMPARTMENTS    |
| 55 | SPARE FUSE CONTAINERS IN FUSE COMPARTMENTS                         |

**SWITCHGEAR**

15KV 200/600 AMP 95KV BIL  
 (2) 3 PHASE SWITCHED FEED (2) THREE PHASE FUSED TAPS

**POWER DESIGN INC.**  
 ODELL, OREGON

| DRAWN: | PAGE | DATE    | DRAWING NO. |
|--------|------|---------|-------------|
| BB     |      | 6-15-94 | 1199        |

FILE REF: