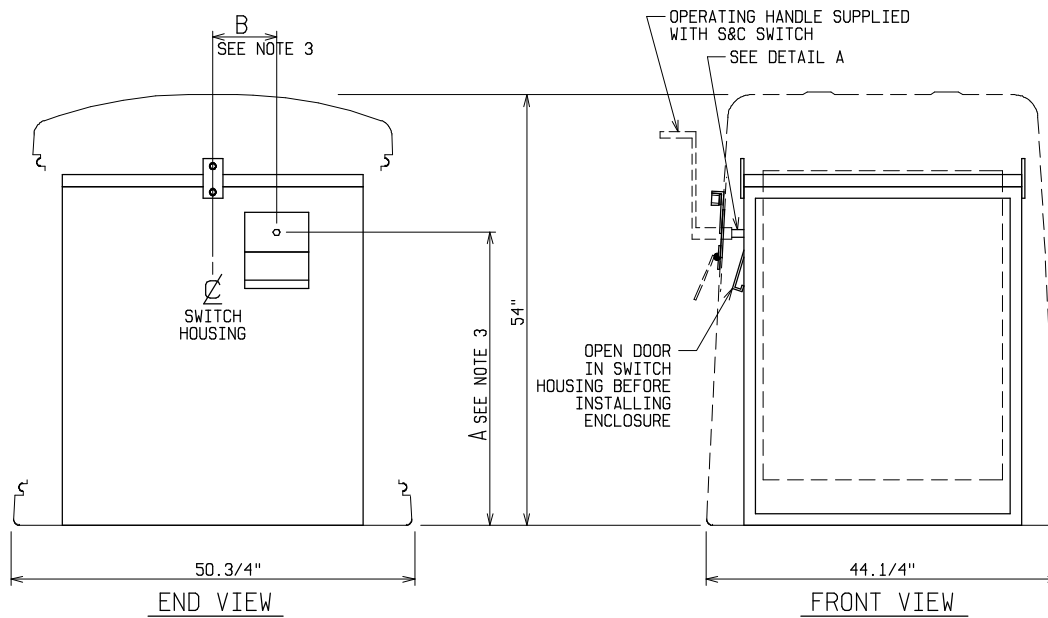


**PAD AND ANCHOR BOLT DIMENSIONS**

ANCHOR BOLTS TO BE 5/8" DIA. AND TO EXTEND 1.1/2" MINIMUM ABOVE PAD. PROVIDE CABLE ENTRY AS REQUIRED.



**NOTE:**

1. **MATERIAL:**
  - 1) FIBERGLASS LAMINATE 3/16" NOMINAL THICKNESS
  - 2) EXTERIOR UV STABILIZED GELCOAT - 14 MIL NOMINAL THICKNESS
  - 3) FIRE RETARDANT - DOES NOT SUPPORT COMBUSTION
  - 4) STAINLESS STEEL HARDWARE
2. **STANDARDS:**
  - 1) CONFORMS TO ANSI C57.12.28, PADMOUNT EQUIPMENT ENCLOSURE INTEGRITY STANDARD
  - 2) CERTIFIED TEST DATA OF ASTM STRUCTURAL STANDARDS AVAILABLE UPON REQUEST
3. CUSTOMER TO PROVIDE "A" AND "B" DIMENSIONS

CATALOG NO: PS2-46-1687-MG-L2

SWITCHGEAR COVER-UP ENCLOSURE

15KV THREE PHASE

S&C PMH-3



**POWER DESIGN INC.**

ODELL, OREGON

HULL MUNICIPAL

FILE REF:

DRAWN: BB	PAGE	DATE 2-17-00	DRAWING NO. 1687
--------------	------	-----------------	---------------------