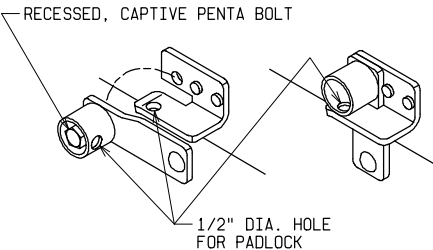
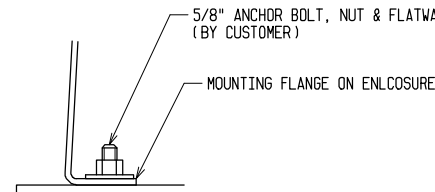


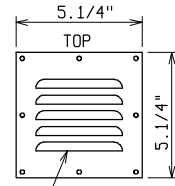
TOP VIEW



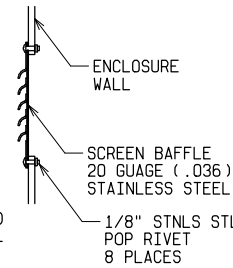
LATCH DETAIL



ENCLOSURE HOLD DOWN DETAIL

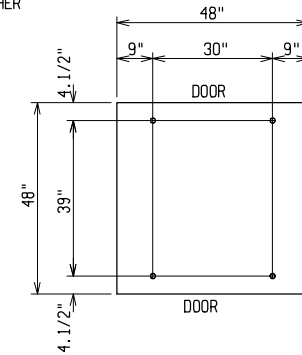


VENT  
16 GAUGE (.060)  
STAINLESS STEEL



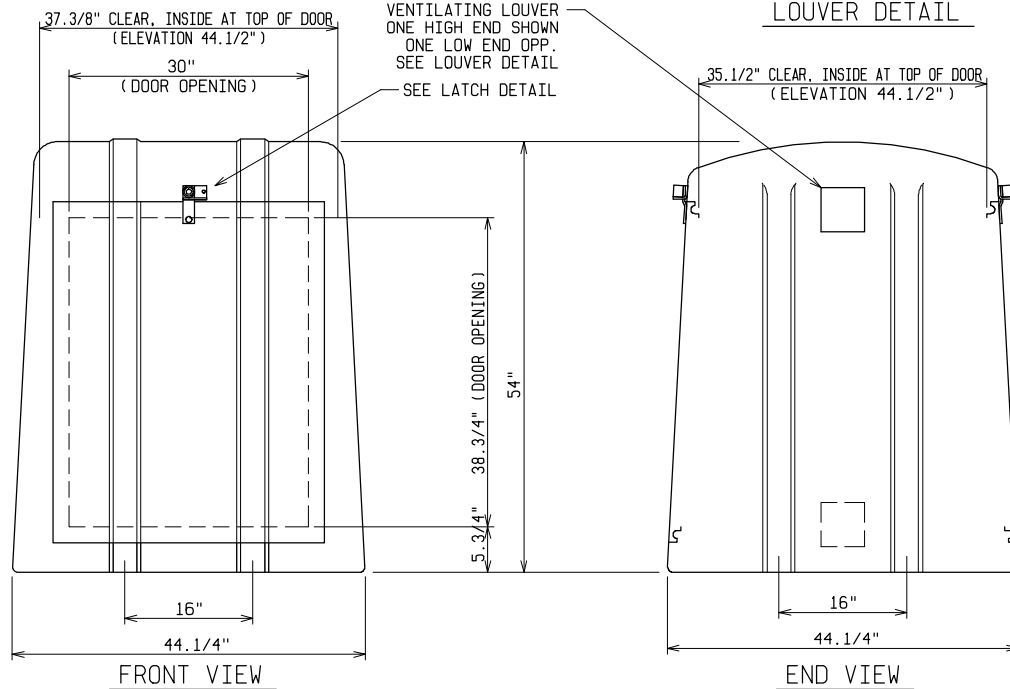
ENCLOSURE WALL  
SCREEN BAFFLE  
20 GAUGE (.036)  
STAINLESS STEEL  
1/8" STNLS STL  
POP RIVET  
8 PLACES

LOUVER DETAIL



PAD AND ANCHOR BOLT DIMENSIONS

ANCHOR BOLTS TO BE 5/8" DIA. AND TO EXTEND 1.1/2" MINIMUM ABOVE PAD. PROVIDE CABLE ENTRY AS REQUIRED.

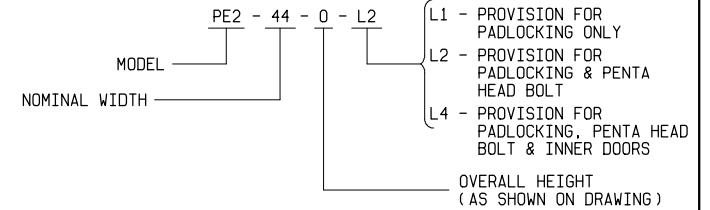


FRONT VIEW

END VIEW

VENTILATING LOUVER  
ONE HIGH END SHOWN  
ONE LOW END OPP.  
SEE LOUVER DETAIL  
SEE LATCH DETAIL

ORDERING INFORMATION:



NOTE:

- MATERIAL:
  - FIBERGLASS LAMINATE 3/16" NOMINAL THICKNESS
  - EXTERIOR UV STABILIZED GELCOAT - 14 MIL NOMINAL THICKNESS
  - FIRE RETARDANT - DOES NOT SUPPORT COMBUSTION
  - STAINLESS STEEL HARDWARE
- STANDARDS:
  - CONFORMS TO ANSI C57.12.28, PADMOUNT EQUIPMENT ENCLOSURE INTEGRITY STANDARD
  - CERTIFIED TEST DATA OF ASTM STRUCTURAL STANDARDS AVAILABLE UPON REQUEST

ENCLOSURE DETAILS

PE2-44-0



POWER DESIGN INC.

ODELL, OREGON

DRAWN: BB	PAGE	DATE 11-2-93	DRAWING NO. 1035 -R1
--------------	------	-----------------	-------------------------

FILE REF.