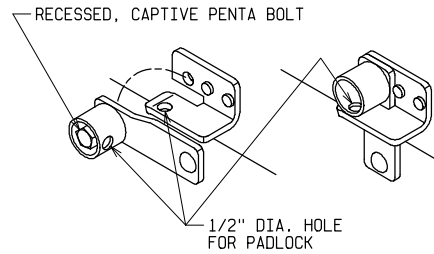
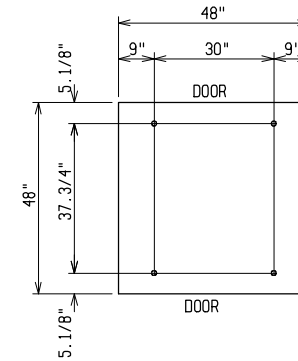


TOP VIEW

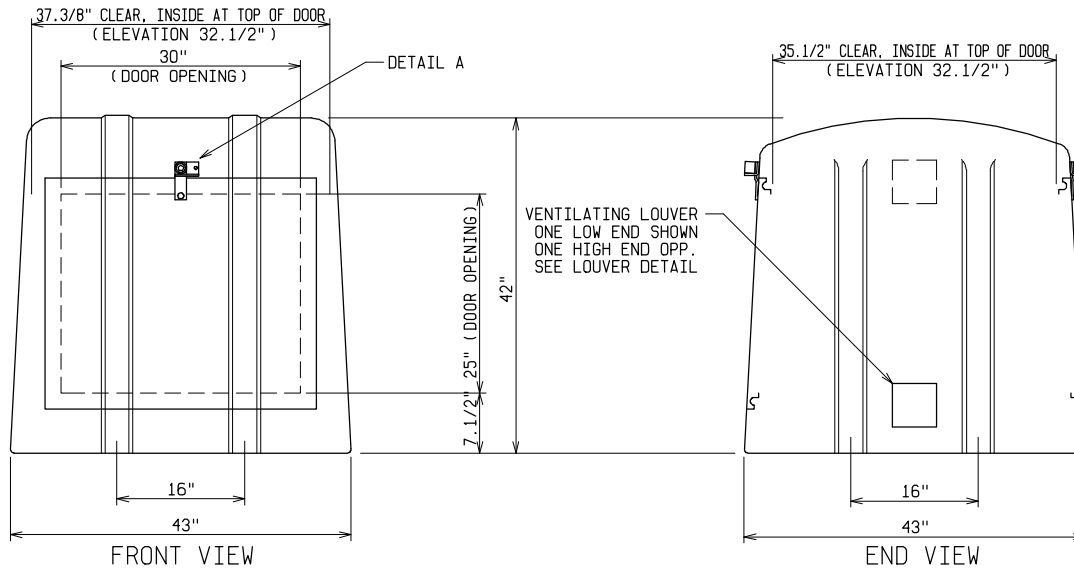


DETAIL A
LATCH DETAIL



PAD AND ANCHOR BOLT DIMENSIONS

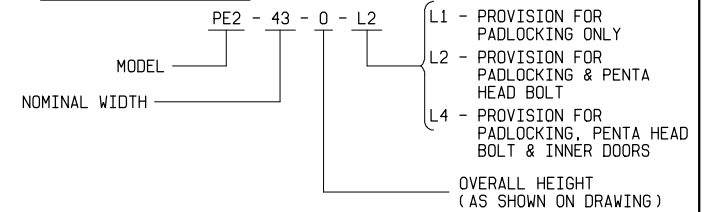
ANCHOR BOLTS TO BE 5/8" DIA. AND TO EXTEND 1-1/2" MINIMUM ABOVE PAD. PROVIDE CABLE ENTRY AS REQUIRED.



FRONT VIEW

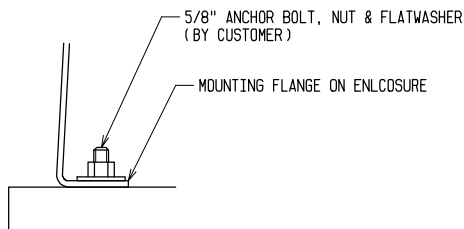
END VIEW

ORDERING INFORMATION:

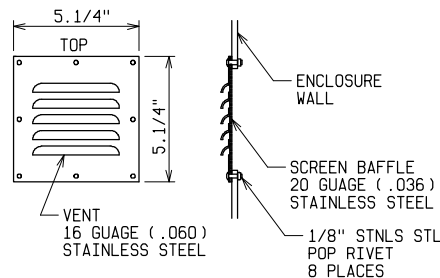


NOTE:

- MATERIAL:
 - FIBERGLASS LAMINATE 3/16" NOMINAL THICKNESS
 - EXTERIOR UV STABILIZED GELCOAT - 14 MIL NOMINAL THICKNESS
 - FIRE RETARDANT - DOES NOT SUPPORT COMBUSTION
 - STAINLESS STEEL HARDWARE
- STANDARDS:
 - CONFORMS TO ANSI C57.12.28, PADMOUNT EQUIPMENT ENCLOSURE INTEGRITY STANDARD
 - CERTIFIED TEST DATA OF ASTM STRUCTURAL STANDARDS AVAILABLE UPON REQUEST



ENCLOSURE HOLD DOWN DETAIL



LOUVER DETAIL

ENCLOSURE DETAILS

PE2-43



POWER DESIGN INC.

ODELL, OREGON

DRAWN: BB	PAGE	DATE 3-16-92	DRAWING NO. 1024 -R1
--------------	------	-----------------	-------------------------

FILE REF.