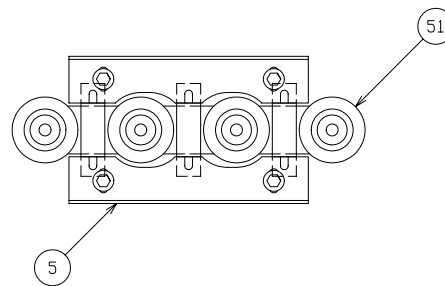
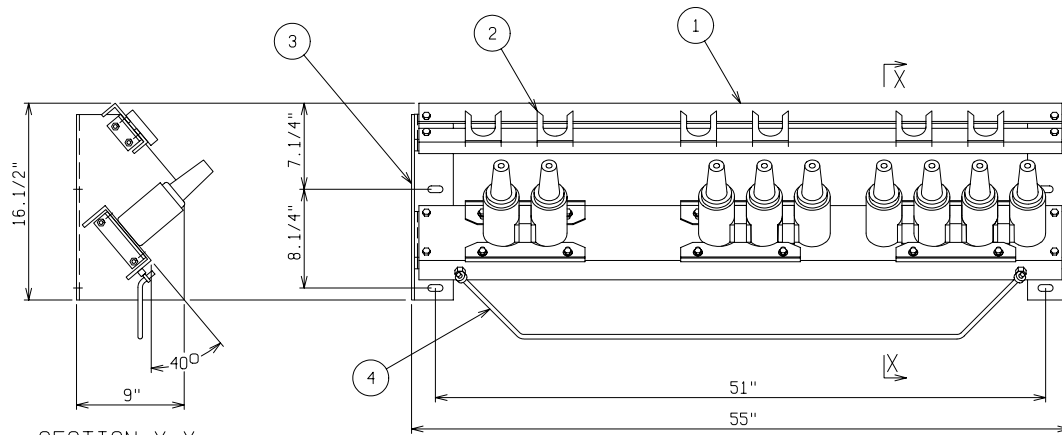


MOUNTING BOLT DETAILS

ANCHORS TO BE 1/2" DIA. AND TO EXTEND 1-1/2" MINIMUM.



JUNCTION MOUNTING DETAIL



SECTION X-X



SCHEMATIC

MATERIAL LIST - STANDARD UNIT	
ITEM	DESCRIPTION
1	ALUMINUM JUNCTION MOUNTING BAR AND PARKING CLIP MOUNTING RAILS
2	ADJUSTABLE LOCATION STAINLESS STEEL PARKING CLIPS
3	ALUMINUM MOUNTING CLIPS
4	3/8" DIAMETER COPPER GROUND BAR
5	STAINLESS STEEL ADJUSTABLE U-STRAP CLAMPS

OPTIONAL EQUIPMENT	
51	200 AMP LOADBREAK JUNCTION - 15KV OR 25KV - 95/125KV BIL - SPECIFY VOLTAGE, MANUFACTURER AND 2, 3 OR 4-WAY

NOTE:

1. MOUNTING BAR WILL WITHSTAND A MINIMUM 400 LB. LOADING TO INSTALL OR REMOVE ELBOWS.

CATALOG NO: MB-30-GB38-1753

DEADFRONT CABLE JUNCTION MOUNT

15/25KV 200 AMP 95/125KV BIL
 THREE PHASE 2, 3 OR 4-WAY LOADBREAK JUNCTION



PG&E

DRAWN: BB	PAGE	DATE 11-2-00	DRAWING NO. 1753
--------------	------	-----------------	---------------------

FILE REF: