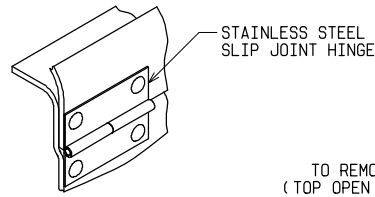
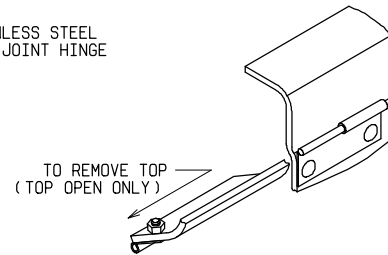


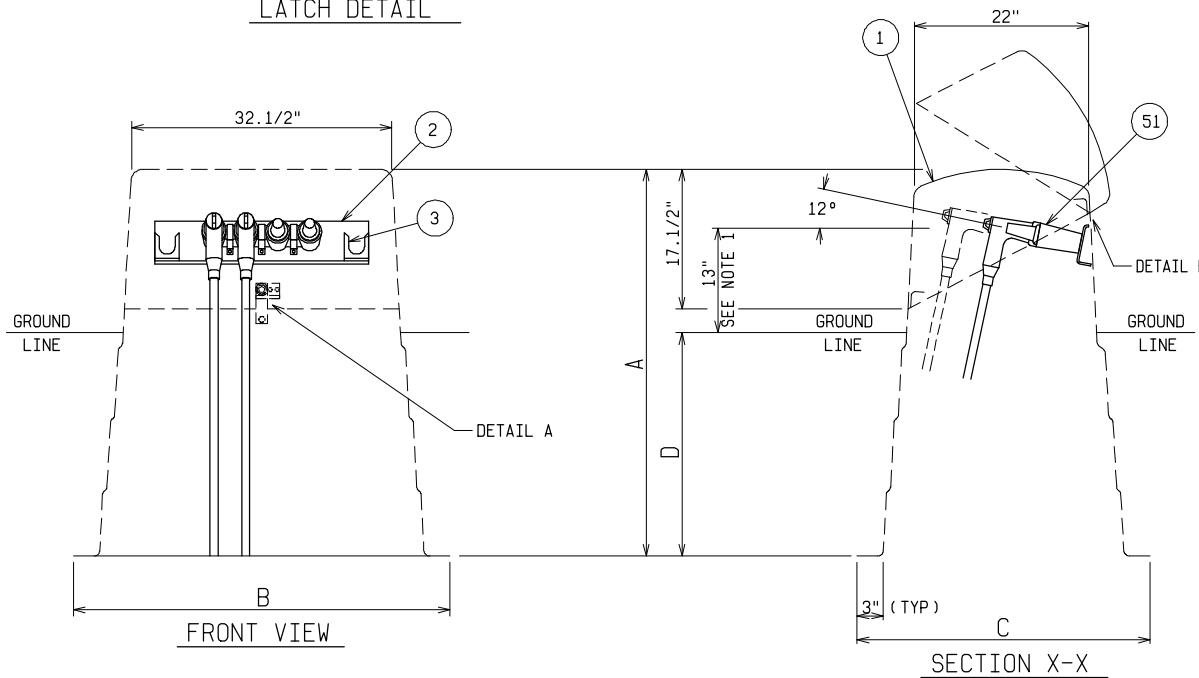
DETAIL A
LATCH DETAIL



DETAIL B
(TOP CLOSED)



DETAIL B
(TOP OPEN)

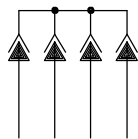


MATERIAL LIST - STANDARD UNIT	
ITEM	DESCRIPTION
1	POWER DESIGN INC MODEL NO CJP-10 FIBERGLASS CABLE JUNCTION PEDESTAL
2	STAINLESS STEEL JUNCTION MOUNTING BAR
3	STAINLESS STEEL PARKING CLIPS

OPTIONAL EQUIPMENT	
51	200 AMP LOADBREAK JUNCTION - SPECIFY MANUFACTURER, VOLTAGE AND 2, 3, OR 4-WAY

NOTE:

1. USER SHOULD SELECT "D", BURIAL DEPTH, DESIRED. SPECIFY "A", OVERALL HEIGHT, AS A SUFFIX TO THE BASIC PART NO. 1.e.: CJP-10-49 = 49" OVERALL HEIGHT 13" TERMINAL HEIGHT MAY BE INCREASED BY DECREASING BURIAL DEPTH OR ORDERING THE NEXT SIZE GREATER "A" DIMENSION.
2. MINIMUM MATERIAL THICKNESS: 3/16"



SCHEMATIC

MODEL No.	OVERALL HEIGHT	OVERALL WIDTH AT BOTTOM	OVERALL DEPTH AT BOTTOM	MAXIMUM RECOMMENDED BURIAL DEPTH SEE NOTE 1
	A	B	C	D
CJP-10-33	33"	44.1/2"	34"	13"
CJP-10-39	39"	45.1/4"	34.3/4"	19"
CJP-10-49	49"	47.1/4"	36.3/4"	29"
CJP-10-54	54"	48.3/4"	38.1/4"	34"

DEADFRONT CABLE JUNCTION PEDESTAL

15/25KV 200 AMP 95/125KV BIL
SINGLE PHASE 2, 3, OR 4-WAY LOADBREAK JUNCTION



POWER DESIGN INC.

ODELL, OREGON

DRAWN: BB	PAGE	DATE 1-31-92	DRAWING NO. 1020 -R1
--------------	------	-----------------	-------------------------

FILE REF.