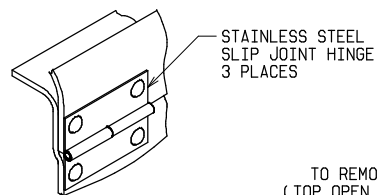


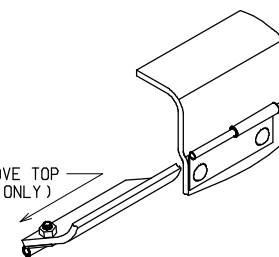
LATCH DETAIL

TWO PLACES

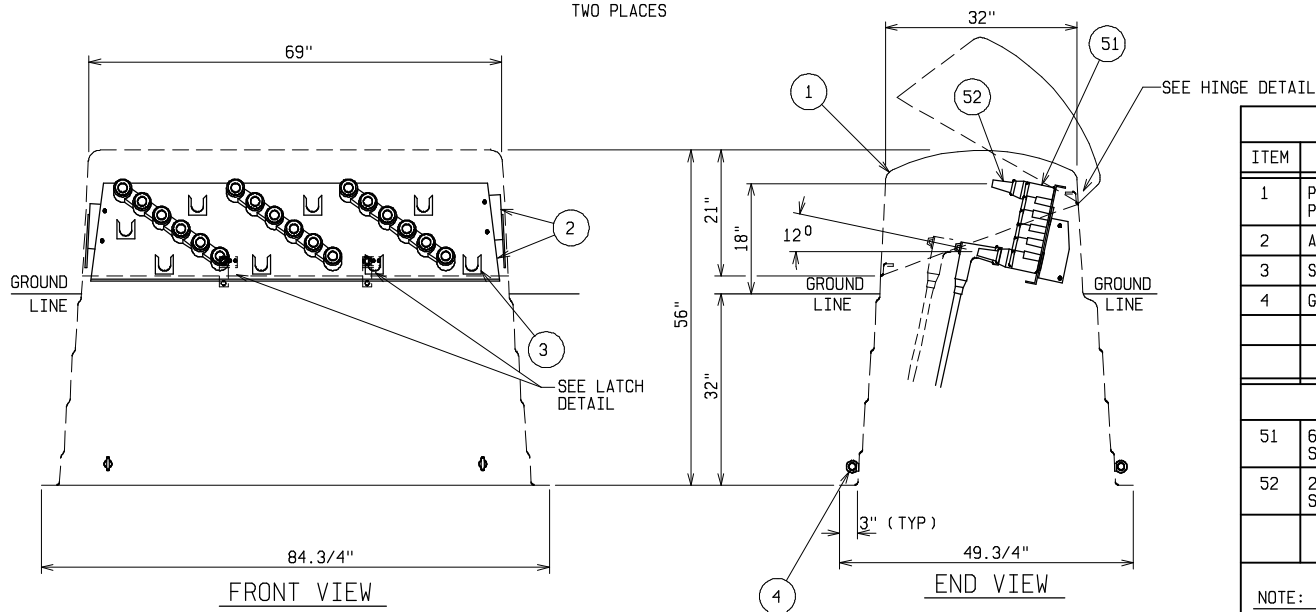


HINGE DETAIL
(TOP CLOSED)

TO REMOVE TOP (TOP OPEN ONLY)



HINGE DETAIL
(TOP OPEN)



MATERIAL LIST - STANDARD UNIT

ITEM	DESCRIPTION
1	POWER DESIGN INC MODEL NO CJP-43-56-L2-WG FIBERGLASS CABLE JUNCTION PEDESTAL - STANDARD LIGHT GREEN
2	ALUMINUM JUNCTION MOUNTING BAR AND PARKING CLIP MOUNTING RAILS
3	STAINLESS STEEL PARKING CLIPS
4	GALVANIZED LIFTING EYE - ONE ON FRONT AND ONE ON BACK

OPTIONAL EQUIPMENT

51	6-WAY HOTSPLICER JUNCTION - 15/25KV - 95/125KV BIL - 200/600 AMP SPECIFY VOLTAGE AND AMPERAGE OF EACH POLE
52	200 AMP LOADBREAK BUSHING INSERT - 15/ 25KV - 95/125KV BIL SPECIFY VOLTAGE

NOTE:

- MATERIAL:**
 - FIBERGLASS LAMINATE 1/4" NOMINAL THICKNESS
 - EXTERIOR UV STABILIZED GELCOAT - 14 MIL NOMINAL THICKNESS
 - FIRE RETARDANT - DOES NOT SUPPORT COMBUSTION
 - TYPE 316 STAINLESS STEEL HARDWARE
- MOUNTING BAR WILL WITHSTAND A MINIMUM 400 LB. LOADING TO INSTALL OR REMOVE ELBOWS.

CATALOG NO: CJP-43-56-L2-WG-1858

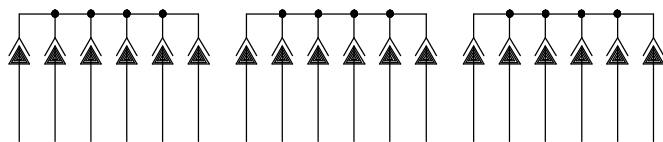
DEADFRONT CABLE JUNCTION PEDESTAL

15/25KV 200/600 AMP 95/125KV BIL
THREE PHASE 6-WAY HOTSPLICER JUNCTION



DRAWN: BB	PAGE	DATE 4-12-02	DRAWING NO. 1858
--------------	------	-----------------	---------------------

FILE REF:



200 AMP LOADBREAK
SCHEMATIC