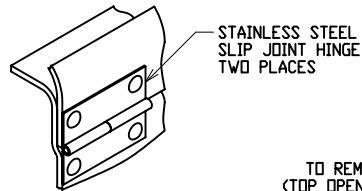
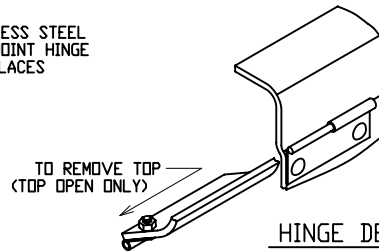


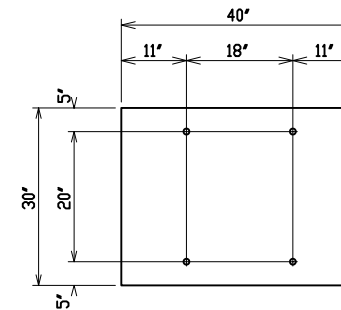
LATCH DETAIL



HINGE DETAIL  
(TOP CLOSED)

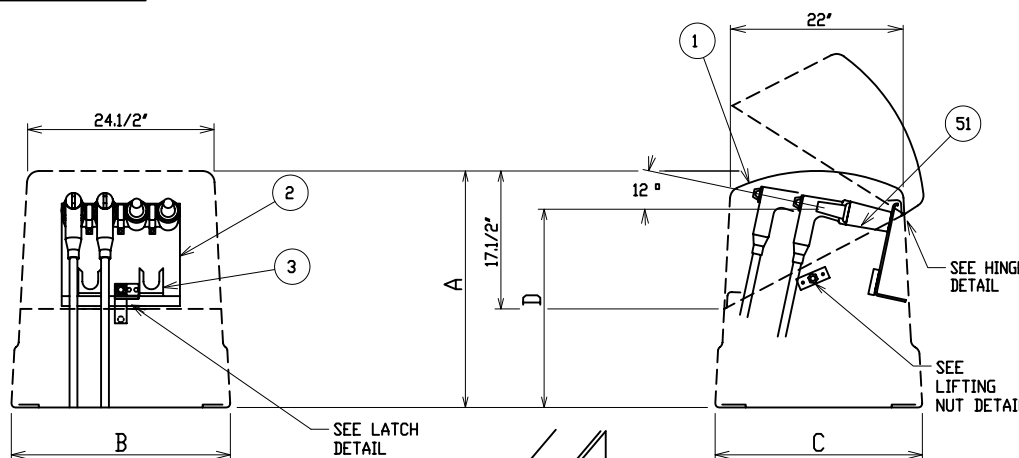


HINGE DETAIL  
(TOP OPEN)



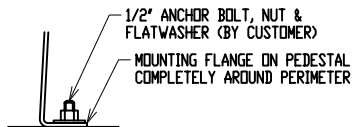
PAD & ANCHOR BOLT DIMENSIONS

ANCHOR BOLTS TO BE 1/2" DIAMETER & TO EXTEND 1-1/2" MINIMUM. PROVIDE CABLE ENTRY AS REQ'D.

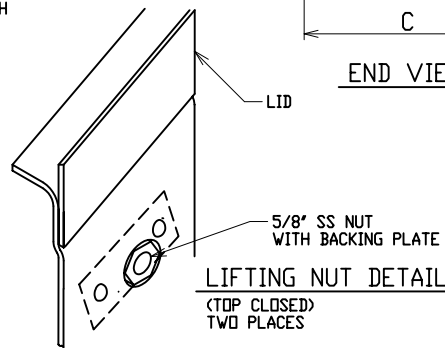


FRONT VIEW

END VIEW



PEDESTAL MTG. DETAIL



LIFTING NUT DETAIL  
(TOP CLOSED)  
TWO PLACES

MATERIAL LIST - STANDARD UNIT

ITEM	DESCRIPTION
1	POWER DESIGN INC MODEL NO CJPF-11 FIBERGLASS CABLE JUNCTION PEDESTAL - MUNSELL GREEN
2	STAINLESS STEEL FEED-THRU MOUNTING BAR
3	STAINLESS STEEL PARKING CLIPS

OPTIONAL EQUIPMENT

51	200 AMP LOADBREAK JUNCTION - 15/25KV - 95/125KV BIL - SPECIFY MANUFACTURER, VOLTAGE AND 2, 3, OR 4-WAY
----	--

NOTE:

1. ORDERING INFORMATION:

USER SHOULD SELECT 'D', BURIAL DEPTH, DESIRED. SPECIFY 'A', OVERALL HEIGHT, AS A SUFFIX TO THE BASIC PART NO. i.e., CJPF-11-30 = 30" OVERALL HEIGHT. 8" TERMINAL HEIGHT MAY BE INCREASED BY DECREASING BURIAL DEPTH OR ORDERING THE NEXT SIZE GREATER 'A' DIMENSION.

2. MATERIAL:

- 1) FIBERGLASS LAMINATE 3/16" NOMINAL THICKNESS
- 2) EXTERIOR UV STABILIZED GELCOAT - 14 MIL NOMINAL THICKNESS - WHITE INTERIOR
- 3) FIRE RETARDANT - DOES NOT SUPPORT COMBUSTION
- 4) STAINLESS STEEL HARDWARE

3. MOUNTING BAR WILL WITHSTAND A MINIMUM 400 L.B. LOADING TO INSTALL OR REMOVE ELBOWS.

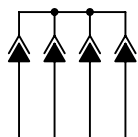
DEADFRONT CABLE JUNCTION PEDESTAL

15/25KV    200 AMP    95/125KV BIL  
SINGLE PHASE    2, 3, OR 4-WAY LOADBREAK JUNCTION



DRAWN: RB	PAGE	DATE 3-29-04	DRAWING NO. 3313-R1
--------------	------	-----------------	------------------------

MODEL No.	OVERALL HEIGHT	OVERALL WIDTH AT BOTTOM	OVERALL DEPTH AT BOTTOM	JUNCTION TERMINAL HEIGHT
	A	B	C	D
CJPF-11-22	22"	27"	24"	14.1/2"
CJPF-11-30	30"	28.3/4"	26.1/4"	22.1/2"



SCHEMATIC

FILE REF: